

# Rental and Co-Op Division



Trusted. Reliable. Efficient.

A Nilfisk-Advance Brand

# Clarke®

# Carpet Extractors

## Clean Track™ 12 Carpet Extractor



- Laminar Flow vacuum shoe recovers more moisture from the carpet
- Single spray jet design provides even spray, no clogging, and efficient flow rate
- Ergonomic adjustable handle folds away for storage and transportation
- See through solution tank lid allows operator to monitor recovery
- 12 in. scrub brush can be removed and serviced without tools
- Self leveling brush automatically adjusts to any carpet height
- Durable Polydur tank provides long life
- Powerful 1.2 HP two-stage vacuum motor removes moisture for quick drying times
- Optional upholstery tool kit is available (PN 11142A)



| Machine        | Model #  | Tanks    |          | Cleaning Path | Vac Motor | Water Lift | Pump PSI | Weight  | Warranty           |
|----------------|----------|----------|----------|---------------|-----------|------------|----------|---------|--------------------|
|                |          | Solution | Recovery |               |           |            |          |         |                    |
| Clean Track 12 | 56265230 | 5 gal.   | 5 gal.   | 12 in.        | 1.2 HP    | 85 in.     | 60 psi   | 68 lbs. | 1 Year Parts/Labor |

## Clean Track™ 16 & 18 Carpet Extractor

- Laminar flow technology allows more moisture recovery and reduces dry times
- Easy fill solution tank
- Large 8 & 13-gallon solution tanks
- Overfill and debris tank
- 16 - 18 in. scrub brushes gives wide cleaning area
- High dump drain allows deposit into toilet or bucket
- Scrub brush can be removed and serviced without tools
- Quick change spray nozzles provide easy maintenance



Optional hard floor kit turns extractor into floor scrubber (PN 56265150)



| Machine              | Model #  | Tanks    |          | Cleaning Path | Vac Motor | Water Lift | Pump psi | Weight   | Warranty                               |
|----------------------|----------|----------|----------|---------------|-----------|------------|----------|----------|--|
|                      |          | Solution | Recovery |               |           |            |          |          |  |
| Clean Track 16       | 56266000 | 8 gal.   | 8 gal.   | 16 in.        | 1.7 HP    | 123 in.    | 60 psi   | 116 lbs. | 8 Years - Tanks • 1 Year - Parts/Labor |
| Clean Track 18       | 56266001 | 13 gal.  | 12 gal.  | 18 in.        | 1.7 HP    | 123 in.    | 60 psi   | 119 lbs. | 8 Years - Tanks • 1 Year - Parts/Labor |
| Clean Track 18 W & R | 56266002 | 13 gal.  | 12 gal.  | 18 in.        | 1.7 HP    | 123 in.    | 100 psi  | 121 lbs. | 8 Years - Tanks • 1 Year - Parts/Labor |

## BextSpot Carpet Spot Cleaning System

### Standard Unit -

- Powerful 55 psi pump deep cleans carpet
- 2.5 gallon recovery tank and 2 gallon solution tank
- Durable Polydur tank provides long life
- Powerful 1.2 HP two-stage vacuum motor removes moisture for quick drying
- 10 ft. of recovery/solution hose and hand tool

### Deluxe Unit

Features all of the above, plus:

- 4 ft. steel wand with 8 in. plastic head
- Transportation handle
- Chemical set: General purpose spot remover, tannin spot remover, odor digestant

| Machine         | Model # | Tanks    |          |            | Accessories                 | Weight    | Warranty           |
|-----------------|---------|----------|----------|------------|-----------------------------|-----------|--------------------|
|                 |         | Solution | Recovery | Water Lift |                             |           |                    |
| BextSpot        | 04153A  | 2 gal.   | 2.5 gal. | 85 in.     | N/A                         | 28.5 lbs. | 1 Year Parts/Labor |
| BextSpot Deluxe | 04154A  | 2 gal.   | 2.5 gal. | 85 in.     | Wand, Handle & Chemical Set | 48 lbs.   | 1 Year Parts/Labor |



## BEXT® 100 and 100H Carpet Extractor

### BEXT® 100 –

- Low moisture system (.8 gpm) improves dry time
- Powerful 5.7 in. three-stage vacuum motor delivers 140 in. of lift
- Nine-gallon solution and recovery tanks
- Small footprint and built-in lifting handles for portability
- 100 psi demand pump requires no priming
- Includes stainless steel extraction wand and 15 ft. of vacuum and high pressure hose

### BEXT® 100H –

- All of the above features, plus:
- In-line heater that produces water up to 212° F
- Easy circuit locator prevents blown circuits



Use the BEXT® Chat For Grout Floors

|           |         | Tanks    |          |                 |            |                 |         | Warranty |        |        |
|-----------|---------|----------|----------|-----------------|------------|-----------------|---------|----------|--------|--------|
| Machine   | Model # | Solution | Recovery | Vacuum Motor    | Water Lift | On-Board Heater | Weight  | Tank     | Parts  | Labor  |
| BEXT 100  | 04156A  | 9 gal.   | 9 gal.   | 5.7 in. 3-Stage | 140 in.    | N/A             | 69 lbs. | 10 years | 1 year | 1 year |
| BEXT 100H | 04157A  | 9 gal.   | 9 gal.   | 5.7 in. 3-Stage | 140 in.    | Yes             | 75 lbs. | 10 years | 1 year | 1 year |

## BEXT® 300HV & 150H Carpet Extractor



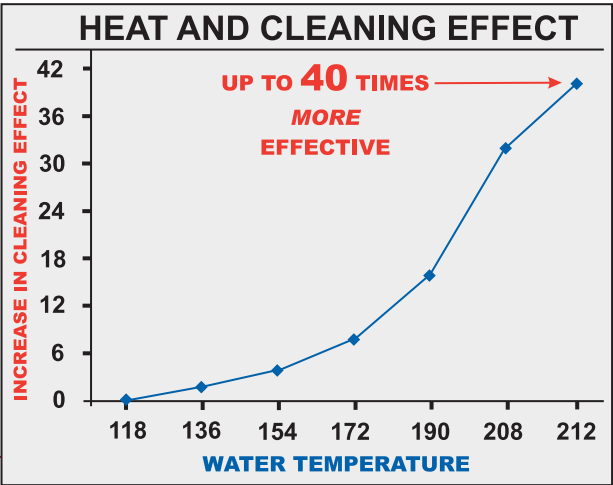
- Industrial grade 7.2 in. vacuum motor provides powerful suction, quicker dry times
- Low moisture system (.8 gpm) improves dry time
- 13 gallon solution tank
- In-line heater that produces water up to 212° F
- Easy circuit locator prevents blown circuits
- Positive displacement 300/75 psi solution pump
- On board chemical storage for spotting solutions
- Easy lift transport handles for portability
- Raised dump valve allows solution dumping into toilet or 5-gallon bucket
- Includes a double bend stainless steel extraction wand, vacuum and high pressure hose, and a primehose.



|            |         | Tanks    |          |                 |            |                 |          | Warranty |         |                    |
|------------|---------|----------|----------|-----------------|------------|-----------------|----------|----------|---------|--------------------|
| Machine    | Model # | Solution | Recovery | Vacuum Motor    | Water Lift | On-Board Heater | Weight   | Tank     | Heater  | Other Parts        |
| BEXT 300HV | 04148A  | 13 gal.  | 11 gal.  | 7.2 in. 3-Stage | 140 in.    | In-line         | 119 lbs. | 10 yrs.  | 10 yrs. | 1 Year Parts/Labor |
| BEXT 150H  | 04147A  | 13 gal.  | 12 gal.  | 5.7 in. 2-Stage | 150 in.    | In-line         | 90 lbs.  | 10 yrs.  | 10 yrs. | 1 Year Parts/Labor |

## Why Use Hot Water? Because it's 40 times more effective!

Increasing solution temperature up to 212°F at the spray tip dramatically improves cleaning results.





# Extractor Accessories

|          |   | Fits Machine   |                |                |          |          |           |           |          |
|----------|---|----------------|----------------|----------------|----------|----------|-----------|-----------|----------|
| Part #   | Description   | Clean Track 12 | Clean Track 16 | Clean Track 18 | BextSpot | BEXT 100 | BEXT 100H | BEXT 150H | BEXT 300 |
| 56314402 | Complete Wand Assembly with Soft and Hard Tools             | ✧              |                |                |          |          |           |           |          |
| 56220070 | Upholstery Hand Tool  | ✧              |                |                |          |          |           |           |          |
| 56265174 | 15 ft. Hose with solution line                              | ✧              |                |                |          |          |           |           |          |
| 56265173 | Wand Assembly with Soft Floor Tool                          | ✧              |                |                |          |          |           |           |          |
| 56262209 | Stand Up Wand   | ✧              |                |                |          |          |           |           |          |
| 56220109 | Hand Tool   | ✧              |                |                |          |          |           |           |          |
| 56265368 | 8 ft. Hose with solution line                               | ✧              |                |                |          |          |           |           |          |
| 11142A   | Upholstery Tool Kit with Carrying Bag                       | ✧              |                |                | ✧        |          |           |           |          |
| 56265150 | Hard Floor Squeegee and Brush Kit                           |                | ✧              |                |          |          |           |           |          |
| 30724A   | Clarke Heated Agitation tool for Tile & Grout (CHAT)        |                |                |                |          | ✧        | ✧         |           | ✧        |
| 52514A   | 3.5 in. enclosed automotive detail tool with .25 in. QC     |                |                |                |          |          | ✧         |           | ✧        |
| 59228A   | 4 in. Upholstery tool with 1/8 in. QC                       |                |                |                |          | ✧        |           |           |          |
| 52955B   | Spotter starter kit: Chemicals, Carpet Brush, Trigger Spray |                |                |                | • Deluxe |          |           |           |          |
| 59230A   | 8 in. Plastic Floor Tool with 1/8 in. QC                    |                |                |                | • Deluxe |          |           |           |          |

✧ Optional Accessory      • Standard Accessory



## BEXT / BextSpot / Clean Track™ Accessories



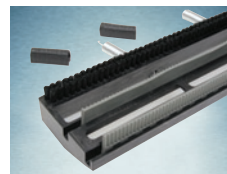
Hose and Hand Tool  
Kit for Clean Track  
12 - PN 11142A



Hose and Hand  
Tool Kit for Clean  
Track 16  
- PN 56266109



8-Foot Vacuum and  
Solution Hose for  
Clean Track 12  
- PN 56265368



BEXT CHAT Tool  
for Tile and Grout  
- PN 30724A



Hand Tool for  
Clean Track 12  
- PN 56220109



3.5 in. Auto De-  
tail Tool for Hot  
Water Extractors  
- PN 52514A



Hard Floor Squee-  
gee and Brush Kit  
for Clean Track 16  
- PN 56265150



Wand for BEXT  
Cold Water  
Extractors  
- PN 61393A  
  
Wand for BEXT Hot  
Water Extractors  
- PN 61394A



## CarpetMaster® 200 Series Dual Motor Upright Vacuums

- HEPA filtration comes standard
- Quick-draw detail wand with secure easy-access tools
- Bright, prominent bag light alerts the operator to change the bag or check for clogs
- Quick and simple bag replacement
- Easy access to air channel in base to clear clogs
- No-tools access to brush for easy change
- Simple brush height adjustment
- 2-year service free cog style sealed belt
- Non-marking bumper
- 50 ft. safety yellow cord



| Name             | Model #    | Width  | Air Flow | Brush                          |            |        | Filtration       | Weight             | Warranty  |
|------------------|------------|--------|----------|--------------------------------|------------|--------|------------------|--------------------|---|
|                  |            |        |          | Brush                          | Position   | Type   |                  |                    |   |
| CarpetMaster 212 | 9060208020 | 12 in. | 93 CFM   | Dual row, chevron style, nylon | Side Mount | Cogged | Four Stage, HEPA | 21 lbs. (9.5 kg)   | Motors and belts - 2 Years<br>Non-wear parts - 1 Year<br>Labor - 1 Year |
| CarpetMaster 215 | 9060408010 | 15 in. | 93 CFM   | Dual row, chevron style, nylon | Side Mount | Cogged | Four Stage, HEPA | 21.3 lbs. (9.7 kg) | Motors and belts - 2 Years<br>Non-wear parts - 1 Year<br>Labor - 1 Year |
| CarpetMaster 218 | 9060508010 | 18 in. | 93 CFM   | Dual row, chevron style, nylon | Side Mount | Cogged | Four Stage, HEPA | 22 lbs. (10 kg)    | Motors and belts - 2 Years<br>Non-wear parts - 1 Year<br>Labor - 1 Year |

## DirectAir™ Electric Drying System



- Three-speed settings allow the operator to choose the correct air flow
- Maximum setting delivers 3,000 CFM
- Multipositional design allows air to be directed at three angles (0°, 45°, 90°)
- Durable roto-mold housing provides long life
- Molded in cord wrap eliminates cord tangle
- Stacks easily for storage or to combine the air flow from multiple units
- Single control knob for easy operation
- Easily serviced

| Machine   | Model # | Air Flow Settings |          |          | Motor | Power Cord | Weight  | Warranty           |
|-----------|---------|-------------------|----------|----------|-------|------------|---------|--------------------|
|           |         | Low               | Medium   | High     |       |            |         |                    |
| DirectAir | 04130D  | 1300 CFM          | 2000 CFM | 3000 CFM | .5 HP | 35 ft.     | 30 lbs. | 1 Year Parts/Labor |

## SW 26 Push Floor Sweeper

- 26 in Sweeping Path
- Tools free adjustment side brooms
- Tools free adjustment main brooms
- Dual caster wheels operate in the “clean path” behind side brooms
- Variable handle height
- Handle folds down to reduce storage footprint; or machine can be hung on wall



| Machine | Model #    | Main Brooms | Side Brooms | Sweeping Width | Hopper Capacity | Weight | Warranty           |
|---------|------------|-------------|-------------|----------------|-----------------|--------|--------------------|
| SW 26   | 9084805010 | 17 in       | 10 in       | 26 in          | 1.2 cubic feet  | 35 lb  | 1 Year Parts/Labor |

# Sweepers/All-Purpose

## BSW 28 Floor Sweeper

- Versatile design allows one machine to sweep both hard and carpeted floors
- Tool-free quick-change filter and brooms
- Highly efficient dust filtration system
- Extra large hopper capacity
- Automatic power shut-off when emptying the hopper
- Low battery voltage shut-off protects battery and prolongs life
- 86 amp hour gel battery
- On-board charger allows battery to be charged by any 110 V outlet
- Fold down handle for easy transport and storage



| Machine | Model #    | Sweeping Path |               | Hopper Capacity | Battery   | Run Time               | Weight   | Warranty |                  |             |
|---------|------------|---------------|---------------|-----------------|-----------|------------------------|----------|----------|------------------|-------------|
|         |            | Main Broom    | w/ Side Broom |                 |           |                        |          | Body     | Battery          | Parts/Labor |
| BSW-28  | 9084705010 | 20 in.        | 28 in.        | 2.1 cubic feet  | 86 AH gel | 2.5 - 3 hrs. on carpet | 171 lbs. | 8 Years  | 18 mo. pro-rated | 1 Year      |

## RSW 37 Battery Rider Sweeper

- 37 inch sweep path
- Battery operated (choice of main-free (AGM) or wet acid)
- Standard onboard battery charger
- Tools-free removable brushes and hopper
- Rugged construction for carpet or hard floor applications



| Machine | Model #  | Main Broom | Side Broom | Sweeping Path | Hopper Capacity | Battery          | Run Time | Weight | Warranty |        |
|---------|----------|------------|------------|---------------|-----------------|------------------|----------|--------|----------|--------|
|         |          |            |            |               |                 |                  |          |        | Parts    | Labor  |
| RSW 37  | 56380314 | 24 in      | 13.5 in    | 37 in         | 1.75 cubic feet | (2) 234 Ah (AGM) | 2.5 hrs. | 553 lb | 3 Years  | 1 Year |
| RSW 37  | 56380315 | 24 in      | 13.5 in    | 37 in         | 1.75 cubic feet | (2) 195 Ah wet   | 2.5 hrs. | 553 lb | 3 Years  | 1 Year |

## TFC 400 All-Purpose Cleaner

- Touch-free, all-purpose cleaner
- Small footprint for easy storage
- Compact, maneuverable
- Optional front mount squeegee
- Simple storage for recovery and solution hose
- Removable pallet contains all electrical components



| Machine | Model #  | Solution Tank | Recovery Tank | Application Flow | Vacuum Motor  | Blower Motor   | Waterlift | Power Cord | Weight | Warranty            |
|---------|----------|---------------|---------------|------------------|---------------|----------------|-----------|------------|--------|---------------------|
| TFC 400 | 56380773 | 20 gal        | 13 gal        | 400 psi (1 gpm)  | 2 stage 900 W | Vacuum Exhaust | 81 in     | 25 ft GFI  | 86 lb  | 2 Years Parts/Labor |



# Wet/Dry Tank Vacuums



## Attix 30 Tank Vacuums

- Powerful vacuum motor generates 135 CFM and 92 inches of water lift
- Quiet motor technology generates low noise rating of 59 dB A
- 8-gallon tank capacity
- Ergonomic hand grip allows easy cable storage
- Hose, wand, floor tool and attachments included
- Push & Clean filter cleaning technology
- Washable PET-fleece filter cartridge for long life
- Tool storage area on cover
- Auto On/Off socket for auxiliary power tool connection (AS/E model only)
- Optional HEPA filter



## Attix 50 Tank Vacuums

- Powerful vacuum motor generates 135 CFM and 92 inches of water lift
- Quiet motor technology generates low noise rating of 59 dB A
- 12-gallon tank capacity
- Ergonomic hand grip allows easy cable storage
- Hose, wand, floor tool and attachments included
- Push & Clean filter cleaning technology
- Extreme Clean filter cleaning technology (AS/E XC only)
- Washable PET-fleece filter cartridge for long life
- Tool storage area on cover
- Auto On/Off socket for auxiliary power tool connection (AS/E models only)
- Optional HEPA filter



- Optional Metal Tool Available



## Attix 19 Tank Vacuums

- Powerful vacuum motor generates 140 CFM and 105 inches of water lift
- Quiet motor technology generates low noise rating of 57 dB A
- 19-gallon tank capacity
- Sturdy dolly mount construction allows for easy transport
- Durable stainless steel canister
- Tilting canister feature makes it easy to dump contents
- Designed for high volume water evacuation (AE model only)
- Can pump water 300 feet horizontally and 23 feet vertically (AE model only)

### Versatile and Flexible

Tilt the container to empty, or simply lift it out of the frame to dispense of its contents elsewhere.



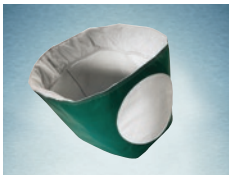
| Name             | Model #   | Tank Size | CFM | Soft Start | Weight  | Warranty            |
|------------------|-----------|-----------|-----|------------|---------|---------------------|
| Attix 30         | 302004229 | 8 gal.    | 120 | No         | 22 lbs. | 2 Years Parts/Labor |
| Attix 30 AS/E    | 302004230 | 8 gal.    | 120 | Yes        | 22 lbs. | 2 Years Parts/Labor |
| Attix 30 HEPA    | 900130    | 8 gal.    | 120 | No         | 22 lbs. | 2 Years Parts/Labor |
| Attix 50         | 302004233 | 12 gal.   | 140 | No         | 24 lbs. | 2 Years Parts/Labor |
| Attix 50 AS/E    | 302004234 | 12 gal.   | 140 | Yes        | 24 lbs. | 2 Years Parts/Labor |
| Attix 50 HEPA    | 900131    | 12 gal.   | 140 | No         | 24 lbs. | 2 Years Parts/Labor |
| Attix 50 AS/E XC | 302004235 | 12 gal.   | 140 | No         | 27 lbs. | 2 Years Parts/Labor |
| Attix 19         | 302001540 | 19 gal.   | 140 | Yes        | 78 lbs. | 2 Years Parts/Labor |
| Attix 19 HEPA    | 900124    | 19 gal.   | 140 | No         | 85 lbs. | 2 Years Parts/Labor |
| Attix 19 AE      | 302001541 | 19 gal.   | 250 | Yes        | 97 lbs. | 2 Years Parts/Labor |

# Tank Vacuum Accessories

## Attix Vacuum Accessories



**Filter Cartridge**  
 Attix 30 & 50 - PN 30200490  
 Attix 50XC - PN 302002842



**Cloth Filter Insert "Special"**  
 Attix 30 & 50 - PN 302000606



**Accessory Net**  
 Attix ALL MODELS - PN 302000524



**Filter Bags**  
 Attix 30 - PN 302004000  
 Attix 50 - PN 302004004

## WAP Accessory Sets



**Industrial Set**  
 - PN 63216



**Industrial/Floor Set**  
 - PN 63214



**Chip Set**  
 - PN 61681



**Animal Care Set**  
 - PN 6095



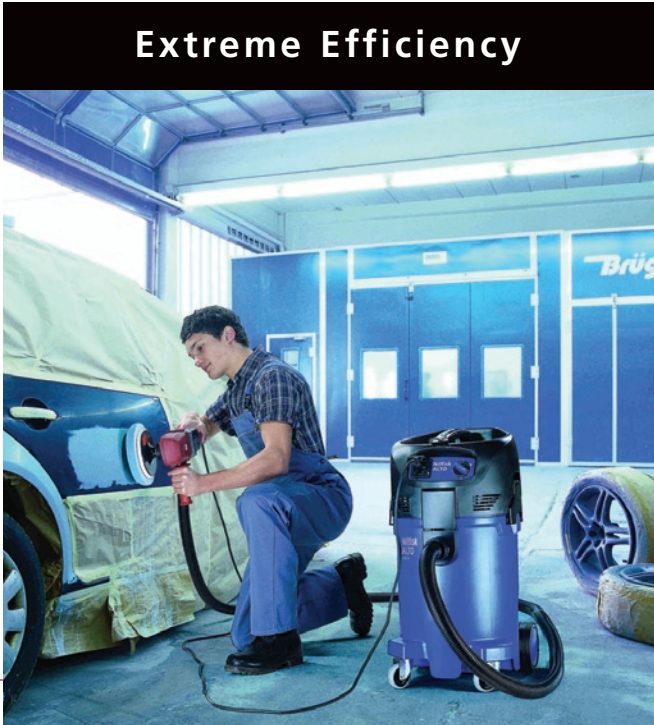
**Oven Cleaning Set**  
 - PN 14341

Push&Clean is now standard on most models



## ATTIX 30 & 50 Powerful Cleaning

The ATTIX 30 / 50 series of vacuums are compact, ergonomic and offer powerful cleaning in a variety of environments. The ATTIX 30 is the perfect solution for professionals on the move, while the larger container volume on the ATTIX 50 is the solution for the customer with a higher frequency of cleaning. All models offer the Push&Clean filter cleaning system.





## Vantage 13 Electric & 17 Battery/Electric Walkbehind Scrubbers



### Vantage 13 Electric Model –

- Removable tanks for easy fills, dumps, and cleanups
- Folds up for easy storage and transport
- Compact design makes it easy to transport
- Simple and intuitive controls

### Vantage 17 Electric Model –

- Offset brush and squeegee design allows access to the wall line
- Large recovery tank opening for easy cleaning
- Durable Polydur tanks provide long life
- Ergonomic palm buttons provide easy operation
- Front and rear urethane squeegee blades pick up solution in forward and reverse

### Vantage 17 Electric Model continued –

- Includes pad drivers
- Easy to empty recovery tank

### Vantage 17 Battery Model –

Same as the Electric model, plus:

- On-Board battery charger
- Maintenance free gel batteries

| Machine             | Model #    | Brush    |         | Pad Pressure | Squeegee | Tank     |          | Sound     | Weight   | Warranty |         |        |
|---------------------|------------|----------|---------|--------------|----------|----------|----------|-----------|----------|----------|---------|--------|
|                     |            | Diameter | Speed   |              |          | Solution | Recovery |           |          | Tanks    | Parts   | Labor  |
| Vantage 13 Electric | 9087238020 | 13 in.   | 200 rpm | 33 lbs.      | 15.2 in. | 1.8 gal. | 2.1 gal. | 72.5 dB A | 51 lbs.  | –        | 3 Years | 1 Year |
| Vantage 17 Battery  | 9087124020 | 17 in.   | 135 rpm | 51 lbs.      | 28.3 in. | 8.2 gal. | 7.7 gal. | 67 dB A   | 346 lbs. | 8 Years  | 3 Years | 1 Year |
| Vantage 17 Electric | 9087125020 | 17 in.   | 150 rpm | 62 lbs.      | 28.3 in. | 8.2 gal. | 7.7 gal. | 76 dB A   | 217 lbs. | 8 Years  | 3 Years | 1 Year |



## Focus® II Compact Autoscrubber®

- 5 models to choose for your application
- Superior solution pick-up
- Quiet operation at 65 dB A
- Easy operation
- Environmentally friendly with efficient solution usage
- Sweep and scrub areas that have grouted or textured floors
- Convenient front and rear fill
- One touch control panel is simple and easy to use



| Machine            | Model # | Brush    |          | Brush Pressure | Vacuum Motor  | Tank      |           | Sound     | Warranty |         |        |           |
|--------------------|---------|----------|----------|----------------|---------------|-----------|-----------|-----------|----------|---------|--------|-----------|
|                    |         | Diameter | Speed    |                |               | Solution  | Recovery  |           | Body     | Parts   | Labor  | Battery   |
| Focus II S20       | 05331A  | 20 in.   | 153 rpm  | 45 & 90 lbs.   | .5 HP 2-Stage | 14.5 gal. | 14.5 gal. | 65.8 dB A | 8 Years  | 3 Years | 1 Year | 18 months |
| Focus II L17       | 05321A  | 17 in.   | 153 rpm  | 45 & 90 lbs.   | .5 HP 2-Stage | 14.5 gal. | 14.5 gal. | 65.8 dB A | 8 Years  | 3 Years | 1 Year | 18 months |
| Focus II L20       | 05341A  | 20 in.   | 153 rpm  | 45 & 90 lbs.   | .5 HP 2-Stage | 14.5 gal. | 14.5 gal. | 65.8 dB A | 8 Years  | 3 Years | 1 Year | 18 months |
| Focus II L20 Cyl.  | 05351A  | 20 in.   | 570 rpm  | 58.4 lbs.      | .5 HP 2-Stage | 14.5 gal. | 14.5 gal. | 65.8 dB A | 8 Years  | 3 Years | 1 Year | 18 months |
| Focus II BOOST® 20 | 05361A  | 20 in.   | 2250 rpm | 40 & 75 lbs.   | .5 HP 2-Stage | 14.5 gal. | 14.5 gal. | 65.8 dB A | 8 Years  | 3 Years | 1 Year | 18 months |

## Focus® 28 Walkbehind Scrubber

- Rugged Polydur tanks
- Accu-Track parabolic squeegee provides superior solution recovery
- Breakaway squeegee adjusts without tools
- On-board battery charger allows the operator to charge anywhere
- Large 30-gallon solution and recovery tanks offer extended productivity
- Powerful 1 HP vacuum motor leaves the floor dry
- Adjustable brush pressure for operator flexibility
- Maximum brush pressure of 220 lbs. provides deep cleaning
- Automatic squeegee lift when in reverse
- Simple control panel is located at the operator's fingertips
- 250 AH batteries are standard



| Machine   | Model # | Brush    |         | Pad Pressure   | Max Cleaning Rate  | Tank     |          | Weight     | Warranty |         |        |
|-----------|---------|----------|---------|----------------|--------------------|----------|----------|------------|----------|---------|--------|
|           |         | Diameter | Speed   |                |                    | Solution | Recovery |            | Tanks    | Parts   | Labor  |
| Focus L28 | 05211K  | 28 in.   | 200 rpm | 150 - 220 lbs. | 32,000 sq. ft./hr. | 30 gal.  | 30 gal.  | 1,005 lbs. | 8 Years  | 3 Years | 1 Year |

# Burnishers

## PBU Propane Burnishers - 21 in. & 27 in.



- Durable, rugged cast aluminum alloy housing
- Powder-coat finish resists oxidation and cleans easily
- Powerful engine maintains speed under heavy loads
- Available in dust control and non-dust control models
- Available with clean and efficient catalytic muffler
- Flexible pad driver follows contours of uneven floors
- Adjustable, ergonomic handle for ease of use
- Variety of sizes and configurations
- 21 in. and 27 in. burnishing pad size (53 and 69 cm)
- 20 lb. capacity propane tank, with 80% safety fill

| Machine  | Model #    | Pad Size | Pad Speed | Motor | Starter  | Muffler (Catalytic) | Centrifugal Clutch | Dust Control | Emission Control | Weight   | Warranty            |
|--|------------|----------|-----------|-------|----------|---------------------|--------------------|--------------|------------------|----------|---------------------|
| Contractor Series<br>(08995A is Dust & Emissions Control Series) | 2113E      | 21"      | 2100 RPM  | 13 HP | Electric | No                  | No                 | No           | Yes              | 195 lbs. | 2 Years Parts/Labor |
|  | 2113ECL    | 21"      | 2100 RPM  | 13 HP | Electric | No                  | Yes                | No           | Yes              | 198 lbs. | 2 Years Parts/Labor |
|  | 2113BCAT   | 21"      | 2100 RPM  | 13 HP | Electric | Yes                 | No                 | No           | Yes              | 208 lbs. | 2 Years Parts/Labor |
|  | 2117B      | 21"      | 2100 RPM  | 17 HP | Electric | No                  | No                 | No           | Yes              | 220 lbs. | 2 Years Parts/Labor |
|  | 2117BCAT   | 21"      | 2100 RPM  | 17 HP | Electric | Yes                 | No                 | No           | Yes              | 223 lbs. | 2 Years Parts/Labor |
|  | 2717B      | 27"      | 1500 RPM  | 17 HP | Electric | No                  | No                 | No           | Yes              | 242 lbs. | 2 Years Parts/Labor |
|  | 2717BCAT   | 27"      | 1500 RPM  | 17 HP | Electric | Yes                 | No                 | No           | Yes              | 245 lbs. | 2 Years Parts/Labor |
|  | 2117BCATCL | 21"      | 2100 RPM  | 17 HP | Electric | Yes                 | Yes                | Yes          | Yes              | 276 lbs. | 2 Years Parts/Labor |
|  | 2717BCATCL | 27"      | 1500 RPM  | 17 HP | Electric | Yes                 | Yes                | Yes          | Yes              | 298 lbs. | 2 Years Parts/Labor |



## Ultra Speed 1500 Corded Burnisher

- Powerful 1.5 HP motor drives the pad at 1500 rpm
- Belt drive design gives this burnisher a low profile which can reach under low areas
- Interlock switch on the handle provides safety
- Ergonomically designed handle is non-conductive for increased safety
- Motor brush wear indicator provides service awareness
- Super-flexible safety yellow power cable comes with a hospital grade plug
- Flexible pad driver has a full harpoon face

| Name    | Model # | Pad Size | Pad Speed | Motor  | Warranty           |
|---------|---------|----------|-----------|--------|--------------------|
| US 1500 | 01530A  | 19 in.   | 1500 rpm  | 1.5 HP | 1 Year Parts/Labor |



Fold-over handle for easy storage and transportation



## A Tradition of Excellence

Since 1953 with the invention of the Clarke-A-Matic, the world's first Automatic Floor Scrubber, Clarke has continued to lead the industry in the design, development and production of the finest automatic scrubbers available.



## CFP™ 130, 170, 200, 1700 & 2000 Polishers

- Planetary gear systems with hardened steel pinion gears provide smooth operation
- Rugged chrome plated steel brush housing
- 360° non-marking bumper provides maximum protection
- Durable die cast aluminum main frame
- Easy release handle clamp can be foot or hand operated
- Molded on rubber grips provide comfort for the operator
- Simple modular switch design allows for easy repairs and low maintenance costs
- Powerful 1 HP and 1.5 HP motors have dual capacitors for maximum start up and run torque

| Name       | Model # | Brush    |             | Motor  | Gear System      | Weight  | Warranty            |
|------------|---------|----------|-------------|--------|------------------|---------|---------------------|
|            |         | Diameter | Speed       |        |                  |         |                     |
| CFP 130    | 01281A  | 13 in.   | 175 rpm     | 1 HP   | Dual Planetary   | 81 lbs. | 5 Years Parts/Labor |
| CFP 170    | 01280A  | 17 in.   | 175 rpm     | 1 HP   | Dual Planetary   | 83 lbs. | 5 Years Parts/Labor |
| CFP 1700   | 01320A  | 17 in.   | 175 rpm     | 1.5 HP | Triple Planetary | 91 lbs. | 5 Years Parts/Labor |
| CFP 1700DS | 01431A  | 17 in.   | 180/320 rpm | 1.5 HP | Triple Planetary | 78 lb.s | 5 Years Parts/Labor |
| CFP 200    | 01360A  | 20 in.   | 175 rpm     | 1 HP   | Dual Planetary   | 87 lbs. | 5 Years Parts/Labor |
| CFP 2000   | 01400A  | 20 in.   | 175 rpm     | 1.5 HP | Triple Planetary | 95 lbs. | 5 Years Parts/Labor |
| CFP 2000DS | 01430A  | 20 in.   | 180/320 rpm | 1.5 HP | Triple Planetary | 81 lbs. | 5 Years Parts/Labor |



## FM 1700 Polisher

- Planetary drive system with helial-cut gears provides smooth transition of power
- Dual independent micro-switches reduce down time
- Die cast aluminum housing is five-times stronger than sand castings
- Stainless steel strain relief protects power cord
- Hospital grade plugs improve durability and increase operator safety
- Large, non-marking wheels make the machine easy to transport
- 360° non-marking vinyl bumper protects walls and furniture
- Powerful 1 HP motor with 1.25 service factor delivers extra power for grinding and sanding
- Dihedral handle design reduces operator fatigue



| Name    | Model # | Brush    |         | Motor | Gear System    | Weight   | Warranty            |                     |
|---------|---------|----------|---------|-------|----------------|----------|---------------------|---------------------|
|         |         | Diameter | Speed   |       |                |          | Gear Box/Motor      | Other Parts         |
| FM 1500 | 01013A  | 15 in.   | 175 rpm | 1 HP  | Dual Planetary | 98 lbs.  | 7 Years Parts/Labor | 5 Years Parts/Labor |
| FM 1700 | 01014A  | 17 in.   | 175 rpm | 1 HP  | Dual Planetary | 102 lbs. | 7 Years Parts/Labor | 5 Years Parts/Labor |
| FM 2000 | 01016A  | 20 in.   | 175 rpm | 1 HP  | Dual Planetary | 107 lbs. | 7 Years Parts/Labor | 5 Years Parts/Labor |

## BOS-18 Floor Machine

- Use for scrubbing, chemical-free stripping and wood floor refinishing
- Powerful, totally enclosed motor requires less maintenance
- 3,600 1/4 inch orbits per minute
- BOOST® pad
- Heavy cast components provide durability and aggressive scrubbing action
- 4 gallon solution tank feeds cleaning solution to the pad
- Ground Fault Circuit Interrupter (GFCI) keeps operator safe
- 50 foot safety yellow power cable
- Non-marking transport wheels

| Name   | Model # | Cleaning Pad | Orbit Speed | Motor      | Solution Tank | Weight | Warranty           |
|--------|---------|--------------|-------------|------------|---------------|--------|--------------------|
| BOS-18 | 01555A  | 12 in x18 in | 3,600 p/m   | 1 hp/120 V | 4 gal         | 112 lb | 1 Year Parts/Labor |



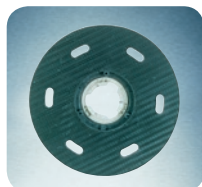
# Polisher Accessories

| Part #   | Accessory Description                                | Fits Floor Polisher |         |         |          |         |         |          |         |
|----------|--|---------------------|---------|---------|----------|---------|---------|----------|---------|
|          |  | CFP 130             | FM 1500 | CFP 170 | CFP 1700 | FM 1700 | CFP 200 | CFP 2000 | FM 2000 |
| 508641   | Solution Tank Assembly (FM)                          |                     | ✧       |         |          | ✧       |         |          | ✧       |
| 53853A   | Solution Tank Assembly (CFP)                         |                     |         | ✧       | ✧        |         | ✧       | ✧        |         |
| 30758A   | 13 in. Short Cut Bristle Pad Driver Assembly         | ✧                   |         |         |          |         |         |          |         |
| 56020371 | 13 in. Super Grip Pad Driver                         | ✧                   |         |         |          |         |         |          |         |
| 56020223 | 13 in. Polypropylene Grit Brush For Medium Scrubbing | ✧                   |         |         |          |         |         |          |         |
| 30767A   | 13 in. Steel Wire Brush                              | ✧                   |         |         |          |         |         |          |         |
| 450914   | 15 in. Polishing Brush                               |                     | ✧       |         |          |         |         |          |         |
| 53152A   | 15 in. Super Grip Pad Driver                         |                     | ✧       |         |          |         |         |          |         |
| 51703A   | 15 in. Polypropylene Scrub Brush                     |                     | ✧       |         |          |         |         |          |         |
| 450916   | 15 in. Steel Wire Brush                              |                     | ✧       |         |          |         |         |          |         |
| 450212   | 15 in. Grinding Disk Assembly with Six Stones        |                     | ✧       |         |          |         |         |          |         |
| 30638A   | 17 in. Short Cut Bristle Pad Driver Assembly         |                     |         | •       | •        |         |         |          |         |
| 460908   | 17 in. Polishing Brush                               |                     |         | ✧       | ✧        | ✧       |         |          |         |
| 37008A   | 17 in. Super Grip Pad Driver                         |                     |         | ✧       | ✧        | ✧       |         |          |         |
| 460215   | Sanding Disc - 2 in. Center Assembly                 |                     |         |         | ✧        | ✧       |         |          |         |
| 51705A   | 17 in. Polypropylene Scrub Brush                     |                     |         | ✧       | ✧        | ✧       |         |          |         |
| 460918   | 17 in. Steel Wire Brush                              |                     |         | ✧       | ✧        | ✧       |         |          |         |
| 500212   | 17 in. Grinding Disk Assembly with Six Stones        |                     |         |         |          | ✧       |         |          |         |
| 30639A   | 20 in. Short Cut Bristle Pad Driver Assembly         |                     |         |         |          |         | •       | •        |         |
| 480916   | 20 in. Polishing Brush                               |                     |         |         |          |         | ✧       | ✧        | ✧       |
| 37011A   | 20 in. Super Grip Pad Driver                         |                     |         |         |          |         | ✧       | ✧        | ✧       |
| 51707A   | 20 in. Polypropylene Scrub Brush                     |                     |         |         |          |         | ✧       | ✧        | ✧       |
| 480924   | 20 in. Steel Wire Brush                              |                     |         |         |          |         | ✧       | ✧        | ✧       |

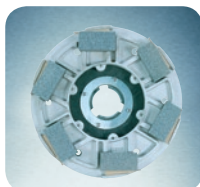
✧ Optional Accessory

• Standard Accessory

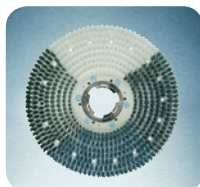
## Polisher Pad Drivers/Discs



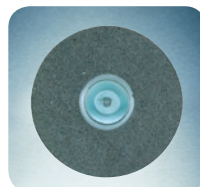
Pad Drivers and Pads



Concrete Grinding Assembly



Various Brushes Available for any Application



Wood Floor Sanding Disc

### The Finest in the Industry

Scrubbing, polishing, buffing, sanding, grinding, honing, or spin bonneting – there's no floor maintenance task too tough for a Clarke Polisher. Often copied but never duplicated, the FM Floor Maintainer has for over 40 years earned the right to be called "the Finest in the Industry".

FM 1700 Polisher



Quality and Durability



# Wood Floor Sanders

## FA-8 The Floor Abrader

- Operates on 120V and uses only 8 amps when abrading
- Cylindrical brush design for multiple applications
- Three brush grits for coarse or fine abrading
- Tool-free quick change brush design
- Long life brushes with 50,000 square feet of abrading life per brush
- Designed with a “vacuum-ready” dust pipe
- Dismantles into three compact pieces for easy loading and storage
- No need for messy chemical bonding agents
- Modified belt and pulley design make for a smooth and quiet operation



| Machine | Model # | Abrasive Brush |         | Motor  | Power Cable | Sound   | Voltage/Frequency/Amps | Weight   |
|---------|---------|----------------|---------|--------|-------------|---------|------------------------|----------|
|         |         | Size           | Speed   |        |             |         |                        |          |
| FA-8    | 07166A  | 6 x 7.5 in.    | 950 rpm | 5/8 HP | 50 ft.      | 66 dB A | 115/60/8               | 125 lbs. |



## Super 7R Edger

- Powerful 1 HP motor drives the pad at 2800 rpm
- Polished aluminum alloy housing provides durability and long life
- On-board light allows the operator to see the floor in corners and closets
- Patented quick-release dust bag simplifies dust removal
- Dust pipe rotates 210° which allows the operator to get into tight spaces
- Dust pipe is designed to accept 1.5 or 2 in. vacuum hoses for additional dust control
- Seven-inch sanding disc accepts standard edger style sand paper
- Ergonomic handles reduce operator fatigue
- Easy access to motor brushes simplifies maintenance



| Name     | Model # | Pad Size | Pad Speed | Motor | Power Cord               | Weight  | Warranty           |
|----------|---------|----------|-----------|-------|--------------------------|---------|--------------------|
| Super 7R | 07125A  | 7 in.    | 2800 rpm  | 1 HP  | 50 ft., grey non-marking | 30 lbs. | 1 Year Parts/Labor |

# Wood Floor Sanders

## EZ-8 Drum Sander & EZ-8 Clamp Drum Sander



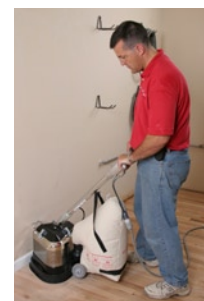
- Powerful 1.5 HP motor rotates the drum at 1800 rpm
- Removable handle makes storage and transportation easy
- Non-slip cogged belt ensures durability and consistent performance
- Non-marking front bumper protects the walls
- Easy access drum door makes changing paper easy and efficient
- Toggle style on-off switch has a safety drop-out feature
- Operates on standard 115V household current
- Vacuum-ready dust pipe will accept a 1.5 or 2 in. vacuum hose
- Patented quick-release dust bag simplifies dust removal
- Expander style drum accepts easy to load sleeve style paper
- Available with traditional clamp-style drum
- Pro-style drum lowering lever gives the operator better control



| Name                | Model # | Width | Drum Speed | Drum Type | Motor  | Power Cord               | Weight   | Warranty           |
|---------------------|---------|-------|------------|-----------|--------|--------------------------|----------|--------------------|
| EZ-8 Clamp Drum     | 07057A  | 8 in. | 1800 rpm   | Clamp     | 1.5 HP | 40 ft., grey non-marking | 105 lbs. | 1 Year Parts/Labor |
| EZ-8 Expansion Drum | 07058A  | 8 in. | 1800 rpm   | Expansion | 1.5 HP | 40 ft., grey non-marking | 105 lbs. | 1 Year Parts/Labor |

## EZ-Sand Multi-Disc Orbital Sander

- Three motors direct drive three 7 in. sanding discs
- Removable handle makes transportation and storage convenient
- Direct drive design removes the maintenance hassle of a belt drive
- Ergonomic handle design eases operator fatigue
- 360° handle rotation makes operation easy
- Orbital sanding action allows the operator to sand with or against the grain
- Quick change style paper design makes changing sand paper quick and easy
- Intermediate pad driver reduces maintenance time and cost
- IEC type interconnect cord prevents the operator from plugging power direct to the base
- Interlock style handle improves operator safety
- Vacuum-ready dust pipe will accept a 1.5 or 2 in. vacuum hose
- Patented quick-release dust bag simplifies dust removal
- Designed for low amp draw (11 amps) to allow for use on standard 15 amp service



| Name    | Model # | Pad Size (3) | Pad Speed | Motors (3) | Power Cord               | Weight   | Warranty           |
|---------|---------|--------------|-----------|------------|--------------------------|----------|--------------------|
| EZ-Sand | 07164A  | 7 in.        | 5000 rpm  | 1/3 HP     | 40 ft., grey non-marking | 102 lbs. | 1 Year Parts/Labor |

## OBS 18 & OBS 18DC Orbital Sander

- Large 12 x 18 in. pad covers a large area
- Orbital sanding action allows the operator to sand with or against the grain
- Very little side torque makes the machine easy to handle and operate
- Ergonomic handle design reduces operator fatigue
- Interlock handle switch offers the operator additional safety
- Harpoon driver face securely fastens the pad and paper to the machine
- Designed for use with adhesive backed paper for quick and simple paper installation
- Totally enclosed 1 HP motor requires less maintenance

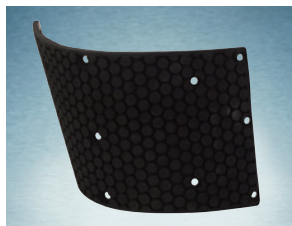
| Name     | Model # | Pad Size    | Pad Speed | Motor | Dust Control | Power Cord               | Weight   | Warranty           |
|----------|---------|-------------|-----------|-------|--------------|--------------------------|----------|--------------------|
| OBS-18   | 07076B  | 12 x 18 in. | 3450      | 1 HP  | No           | 50 ft., grey non-marking | 125 lbs. | 1 Year Parts/Labor |
| OBS-18DC | 07081B  | 12 x 18 in. | 3450      | 1 HP  | Yes          | 50 ft., grey non-marking | 125 lbs. | 1 Year Parts/Labor |



# Sanders Parts/Accessories



Refurbished EZ-8 Drum  
- PN 11115A



EZ-8 Replacement Cover  
- PN 14005A



EZ-8 Drum Belt  
PN - 50916A



OBS-18DC Dust Skirt  
- PN 18445A



Super 7R Sanding Pad  
PN - 21066A



Super 7R Wrench  
- PN 987300



Super 7R Light Bulb  
PN - 40920A



Super 7R On/Off Switch  
- PN 479394A



Super 7R String Tie  
Dust Bag - PN 50952A



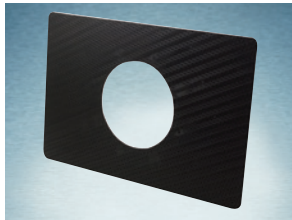
Super 7R Quick-Release  
Dust Bag - PN 53544B



EZ-8 and OBS-18DC String  
Tie Dust Bag - PN 53728A



EZ-8 & OBS-18DC Quick  
Release Dust Bag - PN 53741A



OBS-18 Grip Face Pad Driver  
- PN 32519A



Super 7R Carbon Motor  
Brush - PN 40818A



Washer/Bolt Paper Retainer  
- PN 960125



EZ-Sand Drive Pads (3)  
- PN 11139A

## EDGER DISCS

| Part # | Description              | Grit |
|--------|--------------------------|------|
| 945302 | 7 in. bolt on edger disc | 20   |
| 945305 | 7 in. bolt on edger disc | 36   |
| 945308 | 7 in. bolt on edger disc | 60   |
| 945309 | 7 in. bolt on edger disc | 80   |
| 945310 | 7 in. bolt on edger disc | 100  |

## EZ-8 DRUM PAPER - EXPANDER

| Part # | Description         | Grit |
|--------|---------------------|------|
| 945930 | 8 in. cloth sleeves | 24   |
| 945933 | 8 in. cloth sleeves | 40   |
| 945935 | 8 in. cloth sleeves | 60   |
| 945936 | 8 in. cloth sleeves | 80   |
| 945937 | 8 in. cloth sleeves | 100  |

## OBS-18 PAPER AND SCREENS

| Part # | Description            | Grit |
|--------|------------------------|------|
| 945950 | 12 in. x 18 in. paper  | 20   |
| 945951 | 12 in. x 18 in. paper  | 36   |
| 945954 | 12 in. x 18 in. paper  | 60   |
| 945955 | 12 in. x 18 in. paper  | 80   |
| 945956 | 12 in. x 18 in. paper  | 100  |
| 945962 | 12 in. x 18 in. screen | 100  |
| 945963 | 12 in. x 18 in. screen | 120  |

## EDGER AND EZ-SAND DISCS

| Part # | Description            | Grit |
|--------|------------------------|------|
| 54082A | 7 in. hook & loop disc | 20   |
| 54081A | 7 in. hook & loop disc | 36   |
| 54080A | 7 in. hook & loop disc | 60   |
| 54079A | 7 in. hook & loop disc | 80   |
| 54078a | 7 in. hook & loop disc | 100  |
| 53886A | 7 in. hook & loop disc | 120  |
| 38728A | 7 in. conversion disc  | N/A  |

## EZ-8 DRUM PAPER - CLAMP

| Part # | Description            | Grit |
|--------|------------------------|------|
| 945392 | 8 in. x 19.5 in. paper | 20   |
| 945395 | 8 in. x 19.5 in. paper | 36   |
| 945398 | 8 in. x 19.5 in. paper | 60   |
| 945399 | 8 in. x 19.5 in. paper | 80   |
| 945400 | 8 in. x 19.5 in. paper | 100  |

## 16 IN. ROTARY PAPER & SCREENS

| Part # | Description          | Grit |
|--------|----------------------|------|
| 945568 | 16 in. x 2 in. paper | 20   |
| 945571 | 16 in. x 2 in. paper | 36   |
| 945574 | 16 in. x 2 in. paper | 60   |
| 945575 | 16 in. x 2 in. paper | 80   |
| 945576 | 16 in. x 2 in. paper | 100  |
| 945723 | 16 in. screen        | 80   |
| 945724 | 16 in. screen        | 100  |
| 945725 | 16 in. screen        | 120  |



# Dust Control Sanding



**Your dust control system  
is ready to go!**



Market research shows that the number one reason why home owners will not refinish their hardwood floors is because of their concern about the wood dust that will be generated during the process.

That's right, its not cost, or ability, or effort that is keeping homeowners from tackling this project – it is the fear of dust. With Dust Control Sanding Systems from Clarke®, you can remove your customer's fear of dust, while at the same time increasing your rental revenue by renting an entire dust control system.

All sanding machines from Clarke are now equipped with special dust pipes that easily accept either 1.5 in. or 2 in. hose cuffs. This design change allows the user to hook a Clarke industrial grade tank vacuum (like the WAP Attix Series) directly to the sander, where the vacuum captures virtually all of the wood dust at the source, so it never becomes airborne.

**Make your older model  
sander vacuum-ready with  
these three conversion kits!**



Super 7R Dust Control  
Conversion Kit -  
PN 10827A



EZ-8 Dust Control  
Conversion Kit -  
PN 61881A



OBS-18 Dust Control  
Conversion Kit -  
PN 61879A

*"...the number one reason why home owners  
will not refinish their hardwood floors is  
because of their concern about the wood dust  
that will be generated during the process."*

## CAV 2.2 Dust Control Vacuum

- Very comfortable to use
- Extraordinary power and capacity
- Cleans hard and soft floors
- Very quiet operation - 62 dB A
- Unique harness design reduces strain
- Accommodates most dust bags
- Optional H.E.P.A. filtration



| Name             | Model #    | Motor   | Voltage         | Amps | Air Flow | Waterlift | Noise Level | Filtration | Power Cable | Tool Kit | Weight  | Warranty |
|------------------|------------|---------|-----------------|------|----------|-----------|-------------|------------|-------------|----------|---------|----------|
| CAV 2.2 Standard | 9060708010 | 1,000 W | 110-120 V/60 hz | 10   | 144 CFM  | 99 in     | 62 dB A     | 4 Stage    | 50 ft       | Optional | 10.8 lb | 2 Years  |
| CAV 2.2 Deluxe   | 02149A     | 1,000 W | 110-120 V/60 hz | 10   | 144 CFM  | 99 in     | 62 dB A     | 4 Stage    | 50 ft       | Optional | 10.8 lb | 2 Years  |

## CAV 10 Dust Control Vacuums

- 192 CFM
- Powerful 820 Watt Motors
- Durable polypropylene construction
- Crush proof hose



| Name              | Model #    | Motors           | Voltage    | Amps      | Air Flow | Waterlift | Noise Level | Filtration | Power Cable | Weight | Warranty |
|-------------------|------------|------------------|------------|-----------|----------|-----------|-------------|------------|-------------|--------|----------|
| CAV 10 Standard   | 4010200017 | (2) 1,640 peak W | 120 V/60hz | 14.3 peak | 192 CFM  | 80 in     | 78 dB A     | 1 Stage    | 40 ft       | 98 lb  | 1 Year   |
| CAV 10 w/Tool Kit | 56380895   | (2) 1,640 peak W | 120 V/60hz | 14.3 peak | 192 CFM  | 80 in     | 78 dB A     | 1 Stage    | 40 ft       | 98 lb  | 1 Year   |



# Programs

## Providing Green Equipment for All of Your Floor Care Needs.

As more and more facility managers realize the benefits of environmentally-friendly and health-conscious cleaning, “green cleaning” is becoming a growing movement in the cleaning industry.

As a leading manufacturer of “green” floor-cleaning equipment, Clarke American Sanders is committed to offering products that meet or exceed industry and government standards for green cleaning. Clarke American Sander’s knowledge of equipment and the industry can help you interpret green cleaning standards and assist with:

- Increasing productivity and reducing the cost of labor
- Reducing impact on the environment
- Improving indoor air quality
- Helping people live and work safely



*Focusing on product development,  
increasing productivity, and being  
environmentally responsible.*



## Relax. We’ve Got You Covered.

Nilfisk-Advance delivers the most comprehensive, cost effective maintenance and repair solution for your cleaning equipment fleet.

Our team of Service Technicians manages over 1.5 million active machines at over 35,000 customer locations throughout the United States. In addition to managing scheduled product maintenance, we dispatch and manage over 2,250 service calls every month – one location at a time.

We have the resources in place to help you maximize your equipment investment, optimize uptime, and drive down your total cost to clean.

## Service and Support You Value.

- Preventive maintenance to increase equipment uptime and productivity
- On-site service response with a National reach, local touch
- Technical support that is only a phone call away
- Factory trained technicians and original OEM parts for the quality you expect





This image shows a single sheet of white paper with horizontal ruling lines. The lines are evenly spaced and run across the width of the page. There are no margins, text, or other markings on the paper.

## THREE TRUSTED BRANDS

**Clarke®**

**Clarke®**  
**American Sanders**

**Nilfisk**  
**ALTO**

Providing Rental Equipment for All of Your Floor Care Needs

DISTRIBUTED BY:



14600 21st Avenue North • Plymouth, MN 55447-3408  
Phone: 800.253.0367 • Fax: 800.825.2753

240 Superior Boulevard • Mississauga, Ontario, Canada L5T 2L2  
Phone: 800.668.8400 • Fax: 800.263.5111

©2010 Nilfisk-Advance, Inc. All rights reserved. P/N 71288A 8/10

**Clarke®**

A Nilfisk-Advance Brand

[www.clarkeus.com](http://www.clarkeus.com)