

Rental and Co-Op Division



Trusted. Reliable. Efficient.

A Nilfisk-Advance Brand

Clarke®

Carpet Extractors

Clean Track™ 12 Carpet Extractor



- Laminar Flow vacuum shoe recovers more moisture from the carpet
- Single spray jet design provides even spray, no clogging, and efficient flow rate
- Ergonomic adjustable handle folds away for storage and transportation
- See through solution tank lid allows operator to monitor recovery
- 12 in. scrub brush can be removed and serviced without tools
- Self leveling brush automatically adjusts to any carpet height
- Durable Polydur tank provides long life
- Powerful 1.2 HP two-stage vacuum motor removes moisture for quick drying times
- Optional upholstery tool kit is available (PN 11142A)



Machine	Model #	Tanks		Cleaning Path	Vac Motor	Water Lift	Pump PSI	Weight	Warranty
		Solution	Recovery						
Clean Track 12	56265230	5 gal.	5 gal.	12 in.	1.2 HP	85 in.	60 psi	68 lbs.	1 Year Parts/Labor

Clean Track™ 16 & 18 Carpet Extractor

- Laminar flow technology allows more moisture recovery and reduces dry times
- Easy fill solution tank
- Large 8 & 13-gallon solution tanks
- Overfill and debris tank
- 16 - 18 in. scrub brushes gives wide cleaning area
- High dump drain allows deposit into toilet or bucket
- Scrub brush can be removed and serviced without tools
- Quick change spray nozzles provide easy maintenance



Optional hard floor kit turns extractor into floor scrubber (PN 56265150)



Machine	Model #	Tanks		Cleaning Path	Vac Motor	Water Lift	Pump psi	Weight	Warranty
		Solution	Recovery						
Clean Track 16	56266000	8 gal.	8 gal.	16 in.	1.7 HP	123 in.	60 psi	116 lbs.	8 Years - Tanks • 1 Year - Parts/Labor
Clean Track 18	56266001	13 gal.	12 gal.	18 in.	1.7 HP	123 in.	60 psi	119 lbs.	8 Years - Tanks • 1 Year - Parts/Labor
Clean Track 18 W & R	56266002	13 gal.	12 gal.	18 in.	1.7 HP	123 in.	100 psi	121 lbs.	8 Years - Tanks • 1 Year - Parts/Labor

BextSpot Carpet Spot Cleaning System

Standard Unit -

- Powerful 55 psi pump deep cleans carpet
- 2.5 gallon recovery tank and 2 gallon solution tank
- Durable Polydur tank provides long life
- Powerful 1.2 HP two-stage vacuum motor removes moisture for quick drying
- 10 ft. of recovery/solution hose and hand tool

Deluxe Unit

Features all of the above, plus:

- 4 ft. steel wand with 8 in. plastic head
- Transportation handle
- Chemical set: General purpose spot remover, tannin spot remover, odor digestant

Machine	Model #	Tanks			Accessories	Weight	Warranty
		Solution	Recovery	Water Lift			
BextSpot	04153A	2 gal.	2.5 gal.	85 in.	N/A	28.5 lbs.	1 Year Parts/Labor
BextSpot Deluxe	04154A	2 gal.	2.5 gal.	85 in.	Wand, Handle & Chemical Set	48 lbs.	1 Year Parts/Labor



BEXT® 100 and 100H Carpet Extractor

BEXT® 100 –

- Low moisture system (.8 gpm) improves dry time
- Powerful 5.7 in. three-stage vacuum motor delivers 140 in. of lift
- Nine-gallon solution and recovery tanks
- Small footprint and built-in lifting handles for portability
- 100 psi demand pump requires no priming
- Includes stainless steel extraction wand and 15 ft. of vacuum and high pressure hose

BEXT® 100H –

- All of the above features, plus:
- In-line heater that produces water up to 212° F
- Easy circuit locator prevents blown circuits



Use the BEXT® Chat For Grout Floors

		Tanks						Warranty		
Machine	Model #	Solution	Recovery	Vacuum Motor	Water Lift	On-Board Heater	Weight	Tank	Parts	Labor
BEXT 100	04156A	9 gal.	9 gal.	5.7 in. 3-Stage	140 in.	N/A	69 lbs.	10 years	1 year	1 year
BEXT 100H	04157A	9 gal.	9 gal.	5.7 in. 3-Stage	140 in.	Yes	75 lbs.	10 years	1 year	1 year

BEXT® 300HV & 150H Carpet Extractor



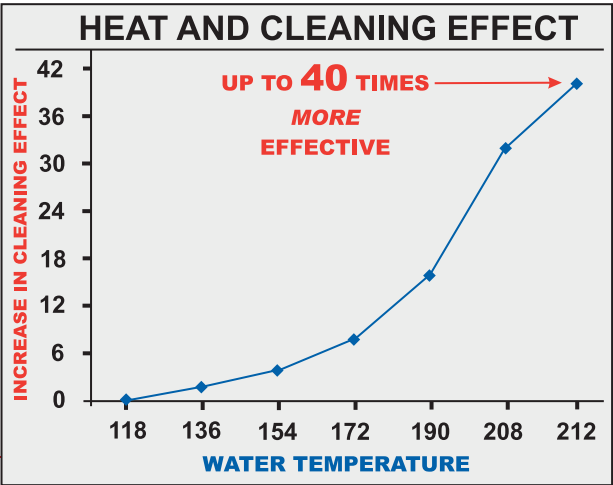
- Industrial grade 7.2 in. vacuum motor provides powerful suction, quicker dry times
- Low moisture system (.8 gpm) improves dry time
- 13 gallon solution tank
- In-line heater that produces water up to 212° F
- Easy circuit locator prevents blown circuits
- Positive displacement 300/75 psi solution pump
- On board chemical storage for spotting solutions
- Easy lift transport handles for portability
- Raised dump valve allows solution dumping into toilet or 5-gallon bucket
- Includes a double bend stainless steel extraction wand, vacuum and high pressure hose, and a primehose.



		Tanks						Warranty		
Machine	Model #	Solution	Recovery	Vacuum Motor	Water Lift	On-Board Heater	Weight	Tank	Heater	Other Parts
BEXT 300HV	04148A	13 gal.	11 gal.	7.2 in. 3-Stage	140 in.	In-line	119 lbs.	10 yrs.	10 yrs.	1 Year Parts/Labor
BEXT 150H	04147A	13 gal.	12 gal.	5.7 in. 2-Stage	150 in.	In-line	90 lbs.	10 yrs.	10 yrs.	1 Year Parts/Labor

Why Use Hot Water? Because it's 40 times more effective!

Increasing solution temperature up to 212°F at the spray tip dramatically improves cleaning results.



Extractor Accessories

		Fits Machine							
Part #	Description	Clean Track 12	Clean Track 16	Clean Track 18	BextSpot	BEXT 100	BEXT 100H	BEXT 150H	BEXT 300
56314402	Complete Wand Assembly with Soft and Hard Tools	✧							
56220070	Upholstery Hand Tool	✧							
56265174	15 ft. Hose with solution line	✧							
56265173	Wand Assembly with Soft Floor Tool	✧							
56262209	Stand Up Wand	✧							
56220109	Hand Tool	✧							
56265368	8 ft. Hose with solution line	✧							
11142A	Upholstery Tool Kit with Carrying Bag	✧			✧				
56265150	Hard Floor Squeegee and Brush Kit		✧						
30724A	Clarke Heated Agitation tool for Tile & Grout (CHAT)					✧	✧		✧
52514A	3.5 in. enclosed automotive detail tool with .25 in. QC						✧		✧
59228A	4 in. Upholstery tool with 1/8 in. QC					✧			
52955B	Spotter starter kit: Chemicals, Carpet Brush, Trigger Spray				• Deluxe				
59230A	8 in. Plastic Floor Tool with 1/8 in. QC				• Deluxe				

✧ Optional Accessory • Standard Accessory



BEXT / BextSpot / Clean Track™ Accessories



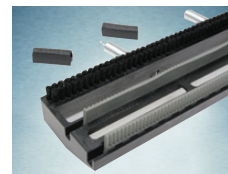
Hose and Hand Tool
Kit for Clean Track
12 - PN 11142A



Hose and Hand
Tool Kit for Clean
Track 16
- PN 56266109



8-Foot Vacuum and
Solution Hose for
Clean Track 12
- PN 56265368



BEXT CHAT Tool
for Tile and Grout
- PN 30724A



Hand Tool for
Clean Track 12
- PN 56220109



3.5 in. Auto De-
tail Tool for Hot
Water Extractors
- PN 52514A



Hard Floor Squee-
gee and Brush Kit
for Clean Track 16
- PN 56265150



Wand for BEXT
Cold Water
Extractors
- PN 61393A

Wand for BEXT Hot
Water Extractors
- PN 61394A

Vacuums / Sweepers

CarpetMaster® 200 Series Dual Motor Upright Vacuums

- HEPA filtration comes standard
- Quick-draw detail wand with secure easy-access tools
- Bright, prominent bag light alerts the operator to change the bag or check for clogs
- Quick and simple bag replacement
- Easy access to air channel in base to clear clogs
- No-tools access to brush for easy change
- Simple brush height adjustment
- 2-year service free cog style sealed belt
- Non-marking bumper
- 50 ft. safety yellow cord



Name	Model #	Width	Air Flow	Brush			Filtration	Weight	Warranty
				Brush	Position	Type			
CarpetMaster 212	9060208020	12 in.	93 CFM	Dual row, chevron style, nylon	Side Mount	Cogged	Four Stage, HEPA	21 lbs. (9.5 kg)	Motors and belts - 2 Years Non-wear parts - 1 Year Labor - 1 Year
CarpetMaster 215	9060408010	15 in.	93 CFM	Dual row, chevron style, nylon	Side Mount	Cogged	Four Stage, HEPA	21.3 lbs. (9.7 kg)	Motors and belts - 2 Years Non-wear parts - 1 Year Labor - 1 Year
CarpetMaster 218	9060508010	18 in.	93 CFM	Dual row, chevron style, nylon	Side Mount	Cogged	Four Stage, HEPA	22 lbs. (10 kg)	Motors and belts - 2 Years Non-wear parts - 1 Year Labor - 1 Year

DirectAir™ Electric Drying System



- Three-speed settings allow the operator to choose the correct air flow
- Maximum setting delivers 3,000 CFM
- Multipositional design allows air to be directed at three angles (0°, 45°, 90°)
- Durable roto-mold housing provides long life
- Molded in cord wrap eliminates cord tangle
- Stacks easily for storage or to combine the air flow from multiple units
- Single control knob for easy operation
- Easily serviced

Machine	Model #	Air Flow Settings			Motor	Power Cord	Weight	Warranty
		Low	Medium	High				
DirectAir	04130D	1300 CFM	2000 CFM	3000 CFM	.5 HP	35 ft.	30 lbs.	1 Year Parts/ Labor

BSW 28 Floor Sweeper

- Versatile design allows one machine to sweep both hard and carpeted floors
- Tool-free quick-change filter and brooms
- Highly efficient dust filtration system
- Extra large hopper capacity
- Automatic power shut-off when emptying the hopper
- Low battery voltage shut-off protects battery and prolongs life
- 86 amp hour gel battery
- On-board charger allows battery to be charged by any 110 V outlet
- Fold down handle for easy transport and storage



Machine	Model #	Sweeping Path		Hopper Capacity	Battery	Run Time	Weight	Warranty		
		Main Broom	w/ Side Broom					Body	Battery	Parts/Labor
BSW-28	9084705010	20 in.	28 in.	2.1 cubic feet	86 AH gel	2.5 - 3 hrs. on carpet	171 lbs.	8 Years	18 mo. pro-rated	1 Year

Wet/Dry Tank Vacuums



Attix 8 Tank Vacuums

- Powerful vacuum motor generates 120 CFM and 90 in. of water lift
- Quiet motor technology generates low noise rating of 57 dB A
- Eight-gallon tank capacity
- PET-fleece filter cartridge is washable for long life
- Smooth interior tank design makes dumping easy and clean
- Hose, wand, floor tool, and attachments included
- Push & Clean filter cleaning technology (AS/E model only)
- Audio filter alarm (AS/E model only)
- Soft start technology with auxiliary power outlet (AS/E model only)



Attix 12 Tank Vacuums

- Powerful vacuum motor generates 140 CFM and 105 in. of water lift
- Quiet motor technology generates low noise rating of 57 dB A
- 12-gallon tank capacity
- PET-fleece filter cartridge is washable for long life
- "Switch off" technology protects motor from damage when brushes are worn
- Hose, wand, floor tool, and attachments included
- Soft start technology with auxiliary power outlet (AS/E model only)



- Optional Metal Tool Available



Attix 19 Tank Vacuums

- Powerful vacuum motor generates 140 CFM and 105 in. of water lift
- Quiet motor technology generates low noise rating of 57 dB A
- 19-gallon tank capacity
- Sturdy doll mount construction allows for easy transport
- Durable stainless steel canister
- Tilting canister feature makes it easy to dump contents
- Designed for high volume water evacuation (AE model only)
- Can pump water 300 ft. horizontally and 23 ft. vertically (AE model only)

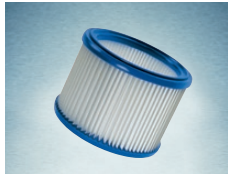
Versatile and Flexible

Tilt the container to empty, or simply lift it out of the frame to dispense of its contents elsewhere.

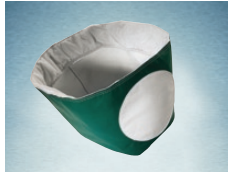


Name	Model #	Tank Size	CFM	Soft Start	Weight	Warranty
Attix 8	302000405	8 gal.	120	No	35 lbs.	2 Years Parts/Labor
Attix 8 AS/E	302000414	8 gal.	120	Yes	35 lbs.	2 Years Parts/Labor
Attix 8 HEPA	900120	8 gal.	120	No	35 lbs.	2 Years Parts/Labor
Attix 12	302000573	12 gal.	140	No	53 lbs.	2 Years Parts/Labor
Attix 12 RDF	302000582	12 gal.	140	Yes	53 lbs.	2 Years Parts/Labor
Attix 12 HEPA	900121	12 gal.	140	No	53 lbs.	2 Years Parts/Labor
Attix 19	302001540	19 gal.	140	No	78 lbs.	2 Years Parts/Labor
Attix 19 HEPA	900124	19 gal.	140	Yes	85 lbs.	2 Years Parts/Labor
Attix 19 AE Flood Sucker	302001541	19 gal.	140	No	97 lbs.	2 Years Parts/Labor
SQ 23	30200125	23 gal.	250	Yes	82 lbs.	2 Years Parts/Labor

Attix Vacuum Accessories



Filter Cartridge
 Attix 8 & 12 - PN 302000461



Cloth Filter Insert "Special"
 Attix 8 - PN 302000606
 Attix 12 - PN 302000525



Accessory Net
 Attix 8 - PN 302000607
 Attix 12 - PN 302000524



Collapsible Handle
 Attix 12 - PN 302000523



Filter Bags
 Attix 8 - PN 302000449
 Attix 12 - PN 302000527

WAP Accessory Sets



Industrial Set
 - PN 63216



Industrial/Floor Set
 - PN 63214



Chip Set
 - PN 61681



Animal Care Set
 - PN 6095



Oven Cleaning Set
 - PN 14341



The Most Silent Worker Around

Even when it does the tough jobs, you won't notice. The WAP Attix 12 was developed with many improvements and a new design. Additionally, it gives you the most silent operation of the WAP line. Then add superior suction performance, automatic filter cleaning, and anti-static features, and you have the perfect wet/dry vacuum for the body shop, rental store, and manufacturing industries.

Extreme Efficiency



Vantage 13 Electric & 17 Battery/Electric Walkbehind Scrubbers



Vantage 13 Electric Model –

- Removable tanks for easy fills, dumps, and cleanups
- Folds up for easy storage and transport
- Compact design makes it easy to transport
- Simple and intuitive controls

Vantage 17 Electric Model –

- Offset brush and squeegee design allows access to the wall line
- Large recovery tank opening for easy cleaning
- Durable Polydur tanks provide long life
- Ergonomic palm buttons provide easy operation
- Front and rear urethane squeegee blades pick up solution in forward and reverse

Vantage 17 Electric Model continued –

- Includes pad drivers
- Easy to empty recovery tank

Vantage 17 Battery Model –

Same as the Electric model, plus:

- On-Board battery charger
- Maintenance free gel batteries

Machine	Model #	Brush		Pad Pressure	Squeegee	Tank		Sound	Weight	Warranty		
		Diameter	Speed			Solution	Recovery			Tanks	Parts	Labor
Vantage 13 Electric	9087238020	13 in.	200 rpm	33 lbs.	15.2 in.	1.8 gal.	2.1 gal.	72.5 dB A	51 lbs.	–	3 Years	1 Year
Vantage 17 Battery	9087124020	17 in.	135 rpm	51 lbs.	28.3 in.	8.2 gal.	7.7 gal.	67 dB A	346 lbs.	8 Years	3 Years	1 Year
Vantage 17 Electric	9087125020	17 in.	150 rpm	62 lbs.	28.3 in.	8.2 gal.	7.7 gal.	76 dB A	217 lbs.	8 Years	3 Years	1 Year



Focus® II Compact Autoscrubber®

- 5 models to choose for your application
- Superior solution pick-up
- Quiet operation at 65 dB A
- Easy operation
- Environmentally friendly with efficient solution usage
- Sweep and scrub areas that have grouted or textured floors
- Convenient front and rear fill
- One touch control panel is simple and easy to use



Machine	Model #	Brush		Brush Pressure	Vacuum Motor	Tank		Sound	Warranty			
		Diameter	Speed			Solution	Recovery		Body	Parts	Labor	Battery
Focus II S20	05331A	20 in.	153 rpm	45 & 90 lbs.	.5 HP 2-Stage	14.5 gal.	14.5 gal.	65.8 dB A	8 Years	3 Years	1 Year	18 months
Focus II L17	05321A	17 in.	153 rpm	45 & 90 lbs.	.5 HP 2-Stage	14.5 gal.	14.5 gal.	65.8 dB A	8 Years	3 Years	1 Year	18 months
Focus II L20	05341A	20 in.	153 rpm	45 & 90 lbs.	.5 HP 2-Stage	14.5 gal.	14.5 gal.	65.8 dB A	8 Years	3 Years	1 Year	18 months
Focus II L20 Cyl.	05351A	20 in.	570 rpm	58.4 lbs.	.5 HP 2-Stage	14.5 gal.	14.5 gal.	65.8 dB A	8 Years	3 Years	1 Year	18 months
Focus II BOOST® 20	05361A	20 in.	2250 rpm	40 & 75 lbs.	.5 HP 2-Stage	14.5 gal.	14.5 gal.	65.8 dB A	8 Years	3 Years	1 Year	18 months

Focus® 28 Walkbehind Scrubber

- Rugged Polydur tanks
- Accu-Track parabolic squeegee provides superior solution recovery
- Breakaway squeegee adjusts without tools
- On-board battery charger allows the operator to charge anywhere
- Large 30-gallon solution and recovery tanks offer extended productivity
- Powerful 1 HP vacuum motor leaves the floor dry
- Adjustable brush pressure for operator flexibility
- Maximum brush pressure of 220 lbs. provides deep cleaning
- Automatic squeegee lift when in reverse
- Simple control panel is located at the operator's fingertips
- 250 AH batteries are standard



Machine	Model #	Brush		Pad Pressure	Max Cleaning Rate	Tank		Weight	Warranty		
		Diameter	Speed			Solution	Recovery		Tanks	Parts	Labor
Focus L28	05211K	28 in.	200 rpm	150 - 220 lbs.	32,000 sq. ft./hr.	30 gal.	30 gal.	1,005 lbs.	8 Years	3 Years	1 Year

PBU Propane Burnishers - 21 in. & 27 in.



- Durable, rugged cast aluminum alloy housing
- Powder-coat finish resists oxidation and cleans easily
- Powerful engine maintains speed under heavy loads
- Available in dust control and non-dust control models
- Available with clean and efficient catalytic muffler
- Flexible pad driver follows contours of uneven floors
- Adjustable, ergonomic handle for ease of use
- Variety of sizes and configurations
- 21 in. and 27 in. burnishing pad size (53 and 69 cm)
- 20 lb. capacity propane tank, with 80% safety fill

Machine	Model #	Pad Size	Pad Speed	Motor	Starter	Muffler (Catalytic)	Centrifugal Clutch	Dust Control	Emission Control	Weight	Warranty
Contractor Series (08995A is Dust & Emissions Control Series)	2113E	21"	2100 RPM	13 HP	Electric	No	No	No	Yes	195 lbs.	2 Years Parts/Labor
	2113ECL	21"	2100 RPM	13 HP	Electric	No	Yes	No	Yes	198 lbs.	2 Years Parts/Labor
	2113BCAT	21"	2100 RPM	13 HP	Electric	Yes	No	No	Yes	208 lbs.	2 Years Parts/Labor
	2117B	21"	2100 RPM	17 HP	Electric	No	No	No	Yes	220 lbs.	2 Years Parts/Labor
	2117BCAT	21"	2100 RPM	17 HP	Electric	Yes	No	No	Yes	223 lbs.	2 Years Parts/Labor
	2717B	27"	1500 RPM	17 HP	Electric	No	No	No	Yes	242 lbs.	2 Years Parts/Labor
	2717BCAT	27"	1500 RPM	17 HP	Electric	Yes	No	No	Yes	245 lbs.	2 Years Parts/Labor
	2117BCATCL	21"	2100 RPM	17 HP	Electric	Yes	Yes	Yes	Yes	276 lbs.	2 Years Parts/Labor
	2717BCATCL	27"	1500 RPM	17 HP	Electric	Yes	Yes	Yes	Yes	298 lbs.	2 Years Parts/Labor



Ultra Speed 1500 Corded Burnisher

- Powerful 1.5 HP motor drives the pad at 1500 rpm
- Belt drive design gives this burnisher a low profile which can reach under low areas
- Interlock switch on the handle provides safety
- Ergonomically designed handle is non-conductive for increased safety
- Motor brush wear indicator provides service awareness
- Super-flexible safety yellow power cable comes with a hospital grade plug
- Flexible pad driver has a full harpoon face

Name	Model #	Pad Size	Pad Speed	Motor	Warranty
US 1500	01530A	19 in.	1500 rpm	1.5 HP	1 Year Parts/Labor



Fold-over handle for easy storage and transportation



A Tradition of Excellence

Since 1953 with the invention of the Clarke-A-Matic, the world's first Automatic Floor Scrubber, Clarke has continued to lead the industry in the design, development and production of the finest automatic scrubbers available.

Floor Polishers

CFP™ 130, 170, 200, 1700 & 2000 Polishers

- Planetary gear systems with hardened steel pinion gears provide smooth operation
- Rugged chrome plated steel brush housing
- 360° non-marking bumper provides maximum protection
- Durable die cast aluminum main frame
- Easy release handle clamp can be foot or hand operated
- Molded on rubber grips provide comfort for the operator
- Simple modular switch design allows for easy repairs and low maintenance costs
- Powerful 1 HP and 1.5 HP motors have dual capacitors for maximum start up and run torque

Name	Model #	Brush		Motor	Gear System	Weight	Warranty
		Diameter	Speed				
CFP 130	01281A	13 in.	175 rpm	1 HP	Dual Planetary	81 lbs.	5 Years Parts/Labor
CFP 170	01280A	17 in.	175 rpm	1 HP	Dual Planetary	83 lbs.	5 Years Parts/Labor
CFP 1700	01320A	17 in.	175 rpm	1.5 HP	Triple Planetary	91 lbs.	5 Years Parts/Labor
CFP 1700DS	01431A	17 in.	180/320 rpm	1.5 HP	Triple Planetary	78 lb.s	5 Years Parts/Labor
CFP 200	01360A	20 in.	175 rpm	1 HP	Dual Planetary	87 lbs.	5 Years Parts/Labor
CFP 2000	01400A	20 in.	175 rpm	1.5 HP	Triple Planetary	95 lbs.	5 Years Parts/Labor
CFP 2000DS	01430A	20 in.	180/320 rpm	1.5 HP	Triple Planetary	81 lbs.	5 Years Parts/Labor



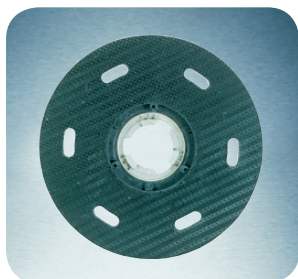
FM 1700 Polisher



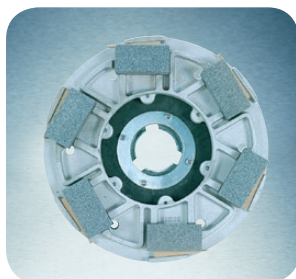
- Planetary drive system with helial-cut gears provides smooth transition of power
- Dual independent micro-switches reduce down time
- Die cast aluminum housing is five-times stronger than sand castings
- Stainless steel strain relief protects power cord
- Hospital grade plugs improve durability and increase operator safety
- Large, non-marking wheels make the machine easy to transport
- 360° non-marking vinyl bumper protects walls and furniture
- Powerful 1 HP motor with 1.25 service factor delivers extra power for grinding and sanding
- Dihedral handle design reduces operator fatigue

Name	Model #	Brush		Motor	Gear System	Weight	Warranty	
		Diameter	Speed				Gear Box/Motor	Other Parts
FM 1500	01013A	15 in.	175 rpm	1 HP	Dual Planetary	98 lbs.	7 Years Parts/Labor	5 Years Parts/Labor
FM 1700	01014A	17 in.	175 rpm	1 HP	Dual Planetary	102 lbs.	7 Years Parts/Labor	5 Years Parts/Labor
FM 2000	01016A	20 in.	175 rpm	1 HP	Dual Planetary	107 lbs.	7 Years Parts/Labor	5 Years Parts/Labor

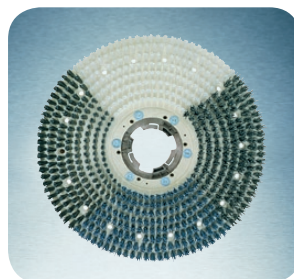
Polisher Pad Drivers/Discs



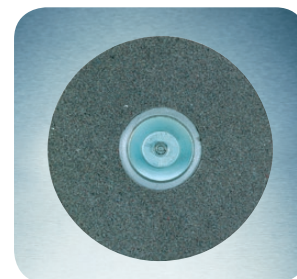
Pad Drivers and Pads



Concrete Grinding Assembly



Various Brushes Available for any Application



Wood Floor Sanding Disc

Polisher Accessories

Part #	Accessory Description	Fits Floor Polisher							
		CFP 130	FM 1500	CFP 170	CFP 1700	FM 1700	CFP 200	CFP 2000	FM 2000
508641	Solution Tank Assembly (FM)		✧			✧			✧
53853A	Solution Tank Assembly (CFP)			✧	✧		✧	✧	
30758A	13 in. Short Cut Bristle Pad Driver Assembly	✧							
56020371	13 in. Super Grip Pad Driver	✧							
56020223	13 in. Polypropylene Grit Brush For Medium Scrubbing	✧							
30767A	13 in. Steel Wire Brush	✧							
450914	15 in. Polishing Brush		✧						
53152A	15 in. Super Grip Pad Driver		✧						
51703A	15 in. Polypropylene Scrub Brush		✧						
450916	15 in. Steel Wire Brush		✧						
450212	15 in. Grinding Disk Assembly with Six Stones		✧						
30638A	17 in. Short Cut Bristle Pad Driver Assembly			•	•				
460908	17 in. Polishing Brush			✧	✧	✧			
37008A	17 in. Super Grip Pad Driver			✧	✧	✧			
460215	Sanding Disc - 2 in. Center Assembly				✧	✧			
51705A	17 in. Polypropylene Scrub Brush			✧	✧	✧			
460918	17 in. Steel Wire Brush			✧	✧	✧			
500212	17 in. Grinding Disk Assembly with Six Stones					✧			
30639A	20 in. Short Cut Bristle Pad Driver Assembly						•	•	
480916	20 in. Polishing Brush						✧	✧	✧
37011A	20 in. Super Grip Pad Driver						✧	✧	✧
51707A	20 in. Polypropylene Scrub Brush						✧	✧	✧
480924	20 in. Steel Wire Brush						✧	✧	✧

✧ Optional Accessory • Standard Accessory

The Finest in the Industry

Scrubbing, polishing, buffing, sanding, grinding, honing, or spin bonneting – there's no floor maintenance task too tough for a Clarke Polisher. Often copied but never duplicated, the FM Floor Maintainer has for over 40 years earned the right to be called "the Finest in the Industry".

FM 1700 Polisher



Quality and Durability



Wood Floor Sanders

FA-8 The Floor Abrader

- Operates on 120V and uses only 8 amps when abrading
- Cylindrical brush design for multiple applications
- Three brush grits for coarse or fine abrading
- Tool-free quick change brush design
- Long life brushes with 50,000 square feet of abrading life per brush
- Designed with a “vacuum-ready” dust pipe
- Dismantles into three compact pieces for easy loading and storage
- No need for messy chemical bonding agents
- Modified belt and pulley design make for a smooth and quiet operation



Machine	Model #	Abrasive Brush		Motor	Power Cable	Sound	Voltage/Frequency/Amps	Weight
		Size	Speed					
FA-8	07166A	6 x 7.5 in.	950 rpm	5/8 HP	50 ft.	66 dB A	115/60/8	125 lbs.



Super 7R Edger

- Powerful 1 HP motor drives the pad at 2800 rpm
- Polished aluminum alloy housing provides durability and long life
- On-board light allows the operator to see the floor in corners and closets
- Patented quick-release dust bag simplifies dust removal
- Dust pipe rotates 210° which allows the operator to get into tight spaces
- Dust pipe is designed to accept 1.5 or 2 in. vacuum hoses for additional dust control
- Seven-inch sanding disc accepts standard edger style sand paper
- Ergonomic handles reduce operator fatigue
- Easy access to motor brushes simplifies maintenance



Name	Model #	Pad Size	Pad Speed	Motor	Power Cord	Weight	Warranty
Super 7R	07125A	7 in.	2800 rpm	1 HP	50 ft., grey non-marking	30 lbs.	1 Year Parts/Labor

EZ-8 Drum Sander & EZ-8 Clamp Drum Sander



- Powerful 1.5 HP motor rotates the drum at 1800 rpm
- Removable handle makes storage and transportation easy
- Non-slip cogged belt ensures durability and consistent performance
- Non-marking front bumper protects the walls
- Easy access drum door makes changing paper easy and efficient
- Toggle style on-off switch has a safety drop-out feature
- Operates on standard 115V household current
- Vacuum-ready dust pipe will accept a 1.5 or 2 in. vacuum hose
- Patented quick-release dust bag simplifies dust removal
- Expander style drum accepts easy to load sleeve style paper
- Available with traditional clamp-style drum
- Pro-style drum lowering lever gives the operator better control

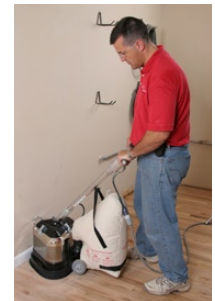


Name	Model #	Width	Drum Speed	Drum Type	Motor	Power Cord	Weight	Warranty
EZ-8 Clamp Drum	07057A	8 in.	1800 rpm	Clamp	1.5 HP	40 ft., grey non-marking	105 lbs.	1 Year Parts/Labor
EZ-8 Expansion Drum	07058A	8 in.	1800 rpm	Expansion	1.5 HP	40 ft., grey non-marking	105 lbs.	1 Year Parts/Labor

EZ-Sand Multi-Disc Orbital Sander

- Three motors direct drive three 7 in. sanding discs
- Removable handle makes transportation and storage convenient
- Direct drive design removes the maintenance hassle of a belt drive
- Ergonomic handle design eases operator fatigue
- 360° handle rotation makes operation easy
- Orbital sanding action allows the operator to sand with or against the grain
- Quick change style paper design makes changing sand paper quick and easy
- Intermediate pad driver reduces maintenance time and cost
- IEC type interconnect cord prevents the operator from plugging power direct to the base
- Interlock style handle improves operator safety
- Vacuum-ready dust pipe will accept a 1.5 or 2 in. vacuum hose
- Patented quick-release dust bag simplifies dust removal
- Designed for low amp draw (11 amps) to allow for use on standard 15 amp service

Name	Model #	Pad Size (3)	Pad Speed	Motors (3)	Power Cord	Weight	Warranty
EZ-Sand	07164A	7 in.	5000 rpm	1/3 HP	40 ft., grey non-marking	102 lbs.	1 Year Parts/Labor



OBS 18 & OBS 18DC Orbital Sander

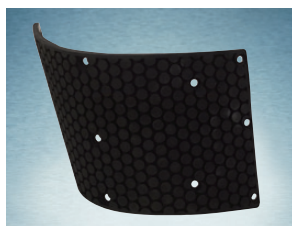
- Large 12 x 18 in. pad covers a large area
- Orbital sanding action allows the operator to sand with or against the grain
- Very little side torque makes the machine easy to handle and operate
- Ergonomic handle design reduces operator fatigue
- Interlock handle switch offers the operator additional safety
- Harpoon driver face securely fastens the pad and paper to the machine
- Designed for use with adhesive backed paper for quick and simple paper installation
- Totally enclosed 1 HP motor requires less maintenance

Name	Model #	Pad Size	Pad Speed	Motor	Dust Control	Power Cord	Weight	Warranty
OBS-18	07076B	12 x 18 in.	3450	1 HP	No	50 ft., grey non-marking	125 lbs.	1 Year Parts/Labor
OBS-18DC	07081B	12 x 18 in.	3450	1 HP	Yes	50 ft., grey non-marking	125 lbs.	1 Year Parts/Labor





Refurbished EZ-8 Drum
- PN 11115A



EZ-8 Replacement Cover
- PN 14005A



EZ-8 Drum Belt
PN - 50916A



OBS-18DC Dust Skirt
- PN 18445A



Super 7R Sanding Pad
PN - 21066A



Super 7R Wrench
- PN 987300



Super 7R Light Bulb
PN - 40920A



Super 7R On/Off Switch
- PN 479394A



Super 7R String Tie
Dust Bag - PN 50952A



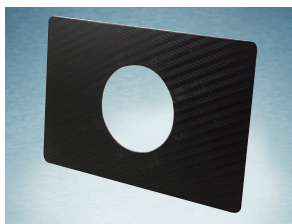
Super 7R Quick-Release
Dust Bag - PN 53544B



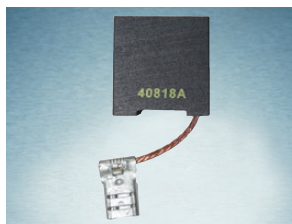
EZ-8 and OBS-18DC String
Tie Dust Bag - PN 53728A



EZ-8 & OBS-18DC Quick
Release Dust Bag - PN 53741A



OBS-18 Grip Face Pad Driver
- PN 32519A



Super 7R Carbon Motor
Brush - PN 40818A



Washer/Bolt Paper Retainer
- PN 960125



EZ-Sand Drive Pads (3)
- PN 11139A

EDGER DISCS

Part #	Description	Grit
945302	7 in. bolt on edger disc	20
945305	7 in. bolt on edger disc	36
945308	7 in. bolt on edger disc	60
945309	7 in. bolt on edger disc	80
945310	7 in. bolt on edger disc	100

EZ-8 DRUM PAPER - EXPANDER

Part #	Description	Grit
945930	8 in. cloth sleeves	24
945933	8 in. cloth sleeves	40
945935	8 in. cloth sleeves	60
945936	8 in. cloth sleeves	80
945937	8 in. cloth sleeves	100

OBS-18 PAPER AND SCREENS

Part #	Description	Grit
945950	12 in. x 18 in. paper	20
945951	12 in. x 18 in. paper	36
945954	12 in. x 18 in. paper	60
945955	12 in. x 18 in. paper	80
945956	12 in. x 18 in. paper	100
945962	12 in. x 18 in. screen	100
945963	12 in. x 18 in. screen	120

EDGER AND EZ-SAND DISCS

Part #	Description	Grit
54082A	7 in. hook & loop disc	20
54081A	7 in. hook & loop disc	36
54080A	7 in. hook & loop disc	60
54079A	7 in. hook & loop disc	80
54078a	7 in. hook & loop disc	100
53886A	7 in. hook & loop disc	120
38728A	7 in. conversion disc	N/A

EZ-8 DRUM PAPER - CLAMP

Part #	Description	Grit
945392	8 in. x 19.5 in. paper	20
945395	8 in. x 19.5 in. paper	36
945398	8 in. x 19.5 in. paper	60
945399	8 in. x 19.5 in. paper	80
945400	8 in. x 19.5 in. paper	100

16 IN. ROTARY PAPER & SCREENS

Part #	Description	Grit
945568	16 in. x 2 in. paper	20
945571	16 in. x 2 in. paper	36
945574	16 in. x 2 in. paper	60
945575	16 in. x 2 in. paper	80
945576	16 in. x 2 in. paper	100
945723	16 in. screen	80
945724	16 in. screen	100
945725	16 in. screen	120

Dust Control Sanding



**Your dust control system
is ready to go!**



Market research shows that the number one reason why home owners will not refinish their hardwood floors is because of their concern about the wood dust that will be generated during the process.

That's right, its not cost, or ability, or effort that is keeping homeowners from tackling this project – it is the fear of dust. With Dust Control Sanding Systems from Clarke®, you can remove your customer's fear of dust, while at the same time increasing your rental revenue by renting an entire dust control system.

All sanding machines from Clarke are now equipped with special dust pipes that easily accept either 1.5 in. or 2 in. hose cuffs. This design change allows the user to hook a Clarke industrial grade tank vacuum (like the WAP Attix Series) directly to the sander, where the vacuum captures virtually all of the wood dust at the source, so it never becomes airborne.

**Make your older model
sander vacuum-ready with
these three conversion kits!**



Super 7R Dust Control
Conversion Kit -
PN 10827A



EZ-8 Dust Control
Conversion Kit -
PN 61881A



OBS-18 Dust Control
Conversion Kit -
PN 61879A

*"...the number one reason why home owners
will not refinish their hardwood floors is
because of their concern about the wood dust
that will be generated during the process."*

THREE TRUSTED BRANDS

Clarke®

Clarke®
American Sanders

Nilfisk
ALTO

Providing Rental Equipment for All of Your Floor Care Needs

DISTRIBUTED BY:



©2009 Nilfisk-Advance, Inc. All rights reserved. P/N 71288A 6/09

14600 21st Avenue North • Plymouth, MN 55447-3408
Phone: 800.545.3454 • Fax: 800.825.2753

Clarke®

A Nilfisk-Advance Brand

www.clarkeus.com