



S12 & S16

Upright Vacuums

- **Three filter types to choose from**
- **Cloth bag or bag with collector cup**
- **Durable composite construction**
- **Low profile design**
- **Tool-free access to brush and belts**

The single motor family of upright vacuums combine value with reliability. Featuring a powerful 7 or 9 amp continuous-duty motor and a high-impact shock resistant composite impeller ensures a long motor life.

Choose from five commercial vacuums with three filter types in the 12 inch models and two filter types in the 16 inch models. The S12 and S16 collector cup (CC) and paper filter (PF) models are CRI Green Label Approved.



The Clarke S12 and S16 vacuums raise the standard for value in a single motor vacuum cleaner.

Trusted. Reliable. Efficient.

A Nilfisk-Advance Brand

Clarke®

Five Upright Vacuums To Choose From: S12, S12PF, S12CC, S16 & S16PF

S12 -

12-inch brush vacuum featuring cloth bag filter that opens at the top

S12PF -

12-inch brush vacuum featuring cloth bag with top-fill paper filter insert

S12CC -

12-inch brush vacuum featuring collector cup with cloth bag filter

S16PF -

16-inch brush vacuum featuring cloth bag with top-fill paper filter insert

S16 -

16-inch brush vacuum featuring cloth bag filter that opens at the top



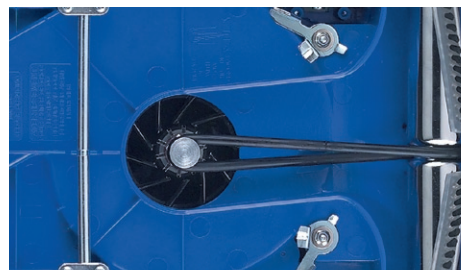
Foot-Operated Height Adjustment

Changing brush height is easy and convenient with a right foot-activated, multi-level adjustment lever. Numeric indicator easily identifies height.



Foot Lever Release

The left foot-activated handle release provides two positions - midway stop with first pedal touch and full pivot to floor with second pedal touch.



Powerful Motor

Powerful 7 or 9 amp continuous-duty motor delivers air movement at 89 cubic feet per minute. High-impact, shock-resistant composite impeller provides reliability and long motor life.

Soft touch handle grip
with finger recess comfort

Handle activated on/off
thick gauge metal nickel
plate construction

Quick release cord wrap
for long 50 ft. power cord

Latest in top-opening bag
filtration at up to 1 micron,
with 98% efficiency

Durable composite housing
construction with non-marking bumper

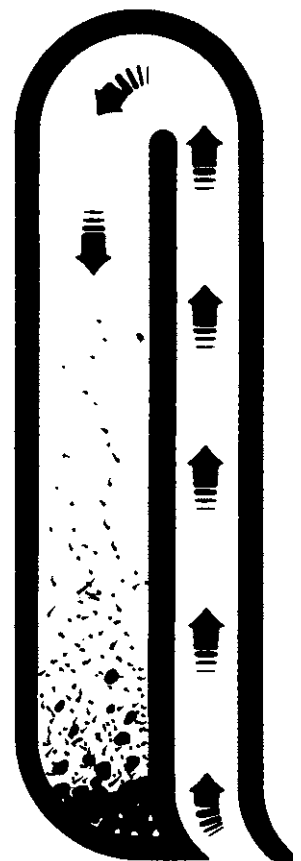
Large 3 in. wheels
provide easy
transport over
thresholds and stairs

Ultra-low 2.75 in. profile allows
3.75 in. of reach for under
counter cleaning access

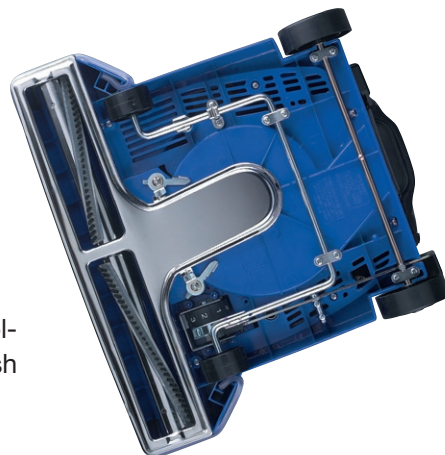
Easy Access to Brush and Belts

Belt, brush and impeller offers tool-
free access, and chevron style brush
features replaceable bristle strips.

The S12 & S16
Collector Cup and
Paper Filter Models
are CRI Green
Label Approved.



No-clog bottom
entry but with top-
fill deposit design
advantages





SPECIFICATIONS	S12	S12PF	S12CC	S16	S16PF
Part Number	03058A	03112A	03082B	03116A	03114A
Motor (Amps)	7 continuous duty			9 continuous duty	
Machine Operation (Amps)	5.5 A				
Air Movement	89 CFM		79 CFM	89 CFM	
Filtration @ 98% Efficiency	3 micron	1 micron	3 micron		1 micron
Filter Style	Top-open cloth	Paper filter bag	Cloth & dirt collector cup	Top-open cloth	Paper filter bag
Max. Sound Level	70 dB A			74 dB A	
Handle Weight (31.5 in)	1.1 lb				
Weight	15 lb			16 lb	
Dimensions	14 in x 13 in x 45 in			14 in x 17 in x 45 in	
Height Profile Over Brush	2.75 in				
CRI Certification	N/A	Green Label		N/A	Green Label
Warranty	Parts & Labor - 1 Year				

Specifications are subject to change without notice.

What does it do best?

- Removes soil from textile flooring and rugs

What makes it easy to use?

- Two-position handle with foot-activated release
- Adjustable foot pedal for brush height settings
- Light 1.1 pound handle
- Handle-activated on/off switch

- Quick-release cord wrap clip
- Comfortable soft-touch handle grip

What enhances its productivity?

- Ultra-low profile
- Non-marking, 50 foot power cord
- Powerful 7 or 9 amp continuous-duty motor

What adds to its durability?

- Heavy gauge steel, nickel-plated handle

- High-impact, shock-resistant composite impeller

- Heavy-duty, long-life motor

- Replaceable brush strips

- Rugged composite housing

What are its safety features?

- Underwriter Laboratories listed

What are its optional features?

- Disposable paper filters



14600 21st Avenue North • Plymouth, MN 55447-3408
Phone: 800.253.0367 • Fax: 800.825.2753

240 Superior Boulevard • Mississauga, Ontario, Canada L5T 2L2
Phone: 800.668.8400 • Fax: 800.263.5111

©2009 Nilfisk-Advance, Inc. All rights reserved. P/N 70085A 7/09

Clarke®

A Nilfisk-Advance Brand

www.clarkeus.com