



Saltix™ 10

Canister Vacuum

The Truly Outstanding Affordable Vacuum Cleaner.

The Clarke Saltix™ 10 is a basic, well-built, thoroughly reliable machine that can be counted on to do the job day in day out. Providing superior performance on multiple surfaces with a lightweight, sustainable design, the Saltix 10 is ideal for cleaning education facilities, offices, healthcare facilities, retail outlets and similar light to medium duty applications.

As with all Clarke machines, the design is outstanding, with careful attention given to ergonomics and environmental friendliness, providing easy maneuverability and quiet operation. The Saltix 10 also offers reduced power consumption via an efficient 900 W fan unit yet still delivering superior cleaning performance.

As part of Clarke's continuous work to support environmental protection, the Saltix 10 vacuum cleaner uses completely recyclable components.

Easy to use and durable in design, the Saltix 10 offers:

- Best in class filling capacity, which means less time spent changing dust bags
- Weighs just 11.5 pounds making it easy to move from place to place
- Low sound pressure level of just 50 dB A makes this vacuum suitable for daytime cleaning
- Secure accessory and power cord storage and rear mounted wand and floor tool storage

- **900 Watt motor**
- **50 dB A sound level**
- **Filter basket standard for bagless operation**
- **Four levels of filtration including certified H.E.P.A. standard**
- **33 foot cord, rotating dust brush and crevice tool stored onboard**
- **Telescopic aluminum wand optional**

Trusted. Reliable. Efficient.

A Nilfisk-Advance Brand

Clarke®



SNAP IT!



| SPECIFICATIONS | Saltix™ 10 |
|--------------------|---|
| Part Number | 107410362 |
| Voltage | 100 V, 120 V |
| Rated Power | 900 W |
| Airflow | 68 cfm (34 L/sec.) |
| Suction | 92 in (21 kPa) |
| Sound Power Level | 50 dB A |
| Dust Bag Capacity | 2.1 gal (10 L) |
| Cable Length | 33 ft (10 m) |
| Main Filter Area | 193 in ² (1,250 cm ²) |
| Filtration | 4 levels - 2 ply filter bag, basket filter, H.E.P.A. filter, motor filter |
| Dimensions (LxWxH) | 15.6 in x 13.4 in x 15.4 in (39.5 cm x 34 cm x 39 cm) |
| Weight | 11.5 lb (5.2 kg) |

Specifications are subject to change without notice.



The unique parking solution means that the Saltix™ 10 can be easily stored or transported, even when space is limited.



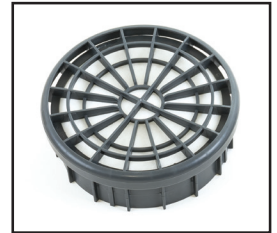
Washable basket filter is part of a 4-stage filter system.



Saltix™ 10 can be carried safely and comfortably in one hand.



Discreet storage for nozzles allow all the tools you need to be within easy reach at all times.



The Saltix™ 10 features standard certified H.E.P.A. filtration.

Standard Accessories Include:

- Dry Basket Filter for Bagless Operation
- H.E.P.A. Filter
- 12 Inch Multi Purpose – Multi-Surface Floor Tool
- Aluminum Wand
- Dust Brush
- Crevice Tool

Optional Accessories Include:

- Rectangular Upholstery Tool
- Turbo Tool Air Driven Brush
- Telescopic Wand

Typical Applications Include:

- Hospitals / Healthcare Facilities
- Commercial Cleaning
- Education Facilities
- Government Buildings
- Retail
- Health Clubs
- Daytime Cleaning
- Airports



©2014 Nilfisk-Advance, Inc. All rights reserved. P/N L3312C 7/14

14600 21st Avenue North • Plymouth, MN 55447-3408
Phone: 800.253.0367 • Fax: 800.825.2753

240 Superior Boulevard • Mississauga, Ontario, Canada L5T 2L2
Phone: 800.668.8400 • Fax: 800.263.5111

Clarke®

www.clarkeus.com

A Nilfisk-Advance Brand